

The logo features a central dark gray triangle with a thin blue border. This triangle is superimposed on a larger, light blue triangle that also has a thin white border. The background is a solid dark gray. The entire composition is framed by a thin blue border.

# The Hawking Academy

# Case Study

Rock Creek School is the only facility for special needs students in Frederick County. For our design, much of our research was conducted on site. By working closely with staff and students, we developed an appreciation for exactly what special needs students require in their learning environment.



## Issues



- Classroom partitions isolate student activities
- Does not meet ADA standards
- Institutional feel
- Inadequate fixtures and appointments
- Narrow hallways

## Our Solution



- Inclusive classroom designs
- Inspiring environment that removes barriers
- Fulfilling experience
- Interactive devices
- Flexible, open transition and common spaces



# The Foundation



Inclusive



Inspiring



Interactive

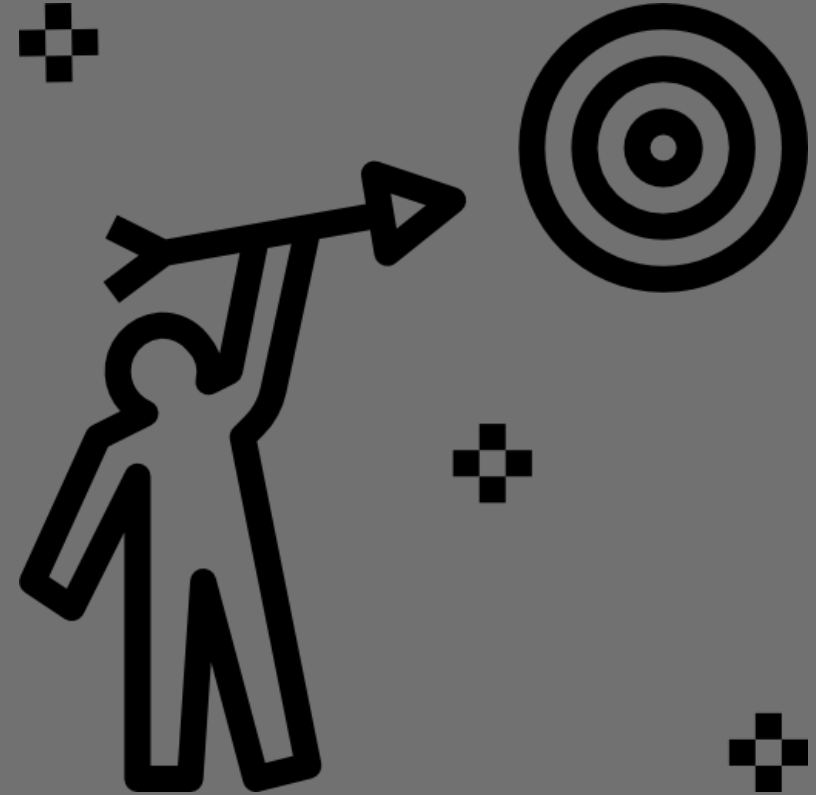


Flexible



Fulfilling

# Parti Pris



A Purposeful Experience



## Research

We used Rock Creek as a case study, as well as ADA standards as a design guide



## Concepts

There was many design iterations before coming up with the final floor plan



## Documentation

We used Revit 2018 and AutoCAD Architecture to document our project



## Visualization

We used Lumion for the renderings and Photoshop for the presentation board

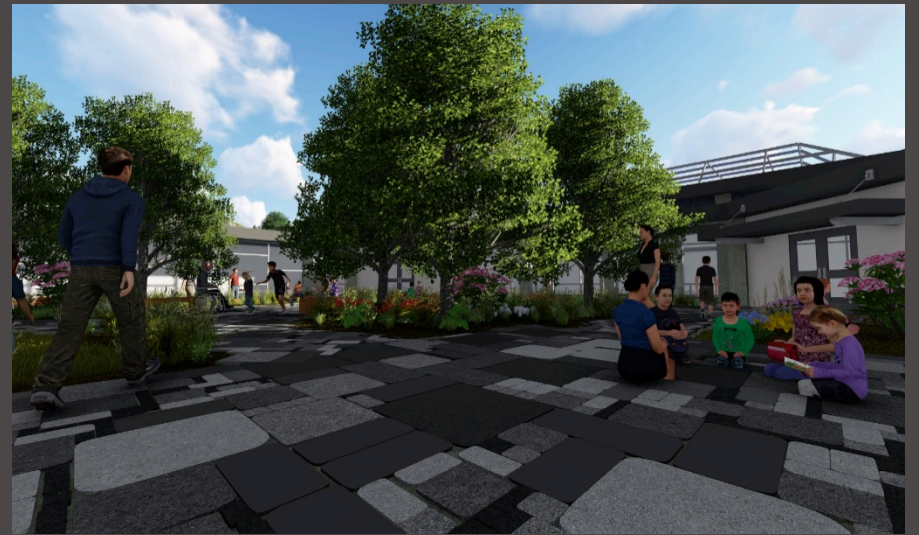


Why is the  
Hawking  
Academy

**DIFFERENT?**



# Courtyard





# Classrooms





# Movement Center



# Sensory Room





# Gymatorium



# Accessibility

Plenty of  
turnaround space for  
wheelchairs

School is one  
floor only, and  
has appropriately  
sized hallways,  
doors, and  
classrooms

All technology is  
adapted for  
simple access

# Budget



**Plumbing**  
\$541,000



**Electrical**  
\$5,604,000



**Square Footage**  
\$18,227,000



**Materials**  
\$4,062,000



**HVAC**  
\$1,724,000

**Landscaping**  
\$925,000

**\$31,083,000**





# LEED Score

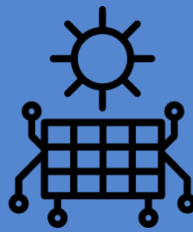
Additional Trees



Permeable  
Pavement



Solar Panels



Low Emitting  
Materials



Green Spaces



Gold (79)

# Our Model



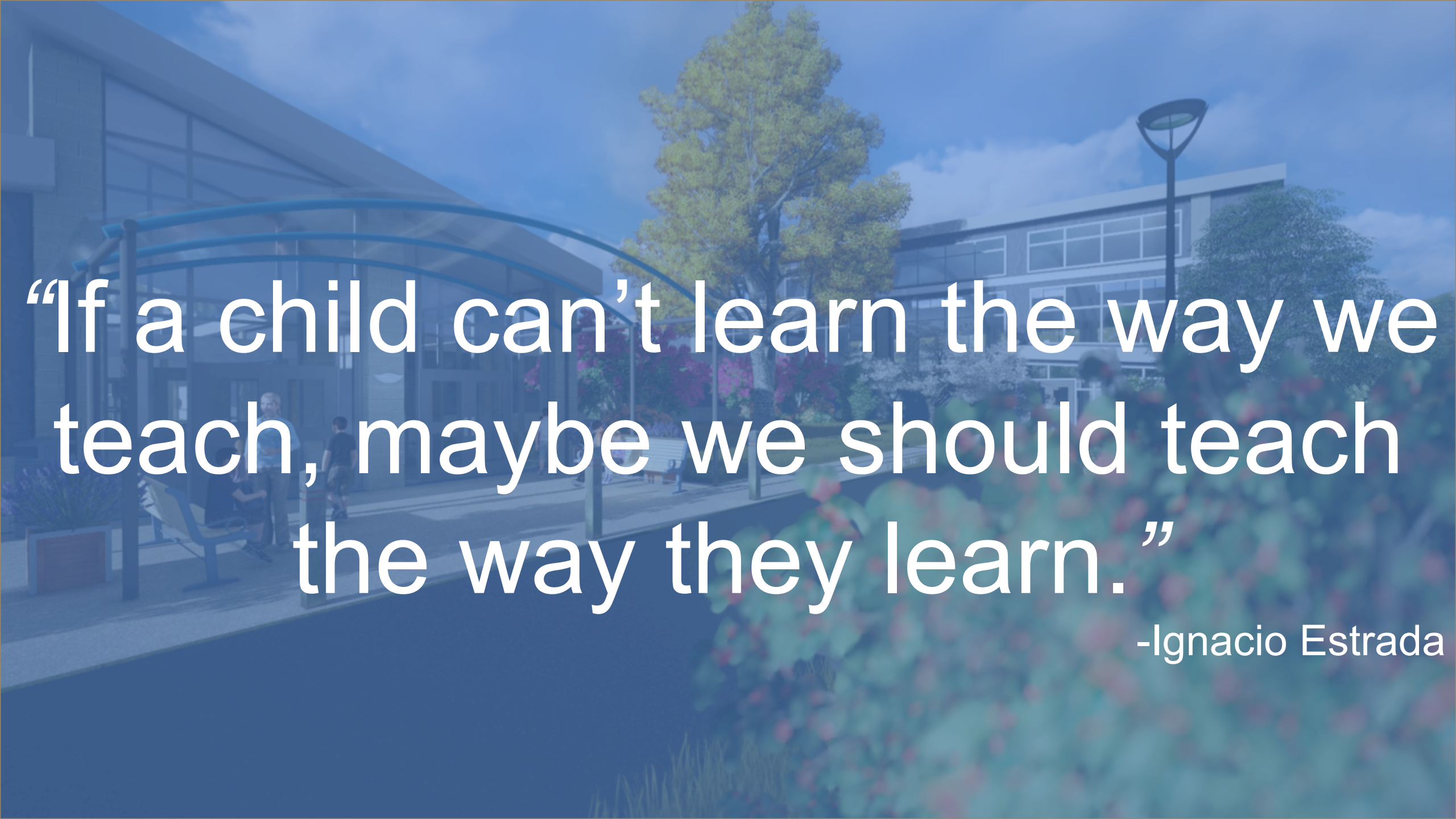


# PROJECT HIGHLIGHTS

---







“If a child can’t learn the way we teach, maybe we should teach the way they learn.”

-Ignacio Estrada