

#AISDFuture — Building it Together

LearningSCAPES Conference 2018 – A4LE



BRAILSFORD & DUNLAVEY

A photograph of a modern school building with large glass windows and a concrete structure. The building is surrounded by trees and a paved area. The text is overlaid on a semi-transparent white box in the center of the image.

Welcome!
Please Explore our
Gallery Stations
We will start our
presentation at 10:25am

#AISDFuture — Building It Together

LearningSCAPES Conference – A4LE



This presentation is intended to share our experiences at Austin Independent School District working with district stakeholders and the community to adopt a Long Range Facilities Master Plan

- Gallery Walks 10:15 am to 10:25 am
- Presentation 10:25 am to 10:45 am
- Round Table Discussions 10:45 am to 11:55 am
(Three 20-min rotations by topic)
- Discussion and Q&A 11:55 am to 12:15 pm

#AISDFuture — Building It Together

LearningSCAPES Conference – A4LE



Learning Objectives

- Participants will learn about the development and use of master planning guiding principles and strategies
- Participants will obtain lessons learned on collaborating together on a new transformational vision for school facilities
- Participants will understand new formats and structure for collaborating with the community and receiving feedback during a master planning process
- Participants will learn case study examples of arriving at master planning project recommendations and closing the feedback loop with stakeholders.

Presenters

LearningSCAPES Conference – A4LE



Beth Wilson

Director of Planning Services,
Austin Independent School
District



Beth Penfield

FMP Consultant
Brailsford & Dunlavey



Ty Taylor

FMP Consultant
Brailsford & Dunlavey



FACILITY MASTER PLAN
UPDATE - EXECUTIVE SUMMARY
April 3, 2017

Reinventing the urban school experience

The FMP Team

March 2016 – April 2017



Program Manager &
Planning Director



Architectural consultant
and PK-12 design expert



Architectural consultant and
local partner



Dept. of Facilities



Full-service stakeholder
engagement firm



Demographic expertise & GIS
capabilities

AISD Reality

- Mixed Results on previous 2013 Bond Propositions
- Recapture Challenges
- AISD Changing Demographics
- Aging Facilities / Deferred Maintenance
- Vision to Reinvent the Urban School Experience

39%

of AISD schools have a facility condition of "poor" or "very poor"

22%

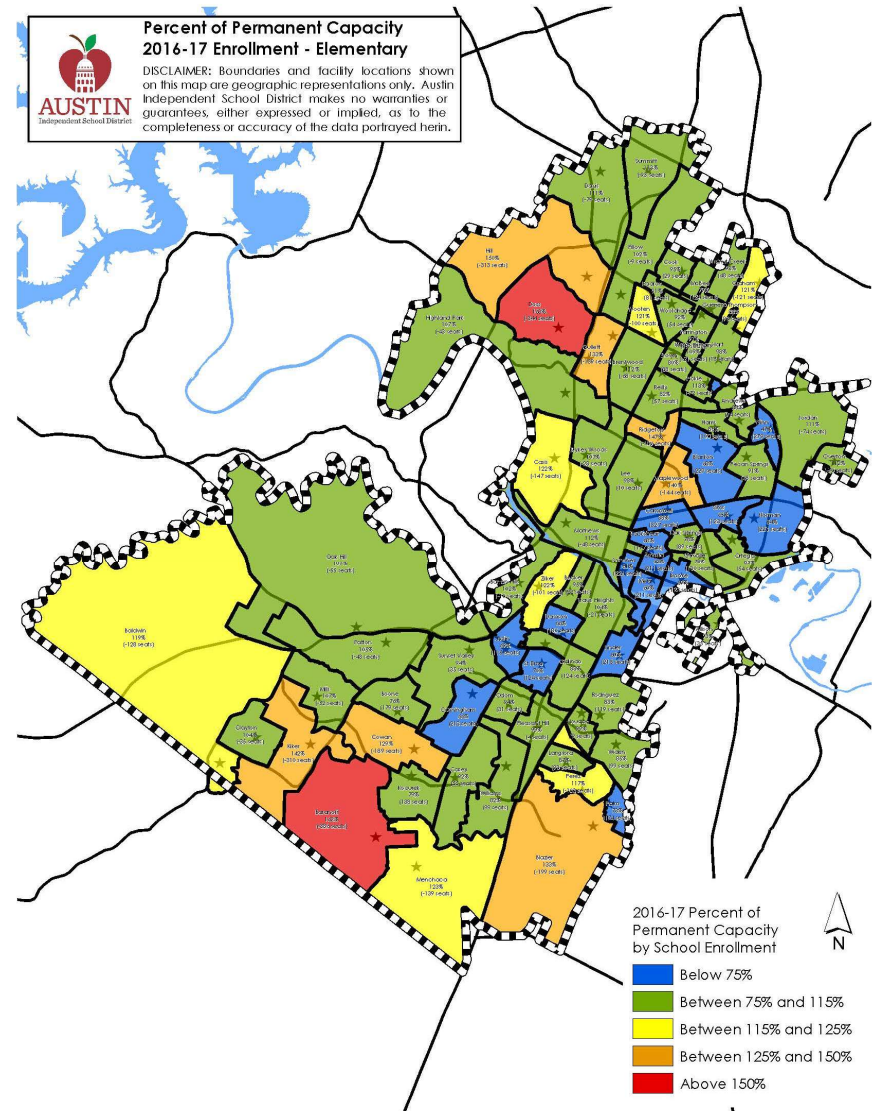
of AISD schools have an educational suitability of "unsatisfactory" or "very unsatisfactory"

17%

of AISD schools are overcrowded (above target range >115% SY 16/17)

27%

of AISD schools are under-enrolled (below target range <75% SY 16/17)



2016 / 2017 FMP Update - Key Differentiators

- Structure and Focus on Community Involvement
- Vision Clarity and Buy In
- Transparency in every aspect of the process
- Developing and Adhering to Planning Strategies
- Starting with Objective Data as a baseline, then using qualitative data from the Community to build final project recommendations.



FABPAC: Elements of Successful Implementation

- Board Appointed – but not obligated to a position
- Regional Engagement Strategy
- Right quantity of members
- Continuity of the Committee
- Committee buy in on the mission and primary objectives
- Exposure to a variety of schools across the District



Collaboration Strategies

- Iterative “series” planned
- Tailor methods to the community
- Utilize a variety of formats including social media
- Mobilization of ambassadors
- Opportunities for feedback and closing the loop



Good night from the #AISDChat team, we're building an #AISDFuture together. Thanks again!

pic.twitter.com/3BmRWjqMbl

AUSTIN ISD @AUSTINISD · 18 DAYS AGO



Austin ISD

@AustinISD

Following

Today is the day! Join us tonight 6-7PM for #AISDChat about Facility Master Plan. Use #AISDChat and #AISDFuture to join convo. See you soon!

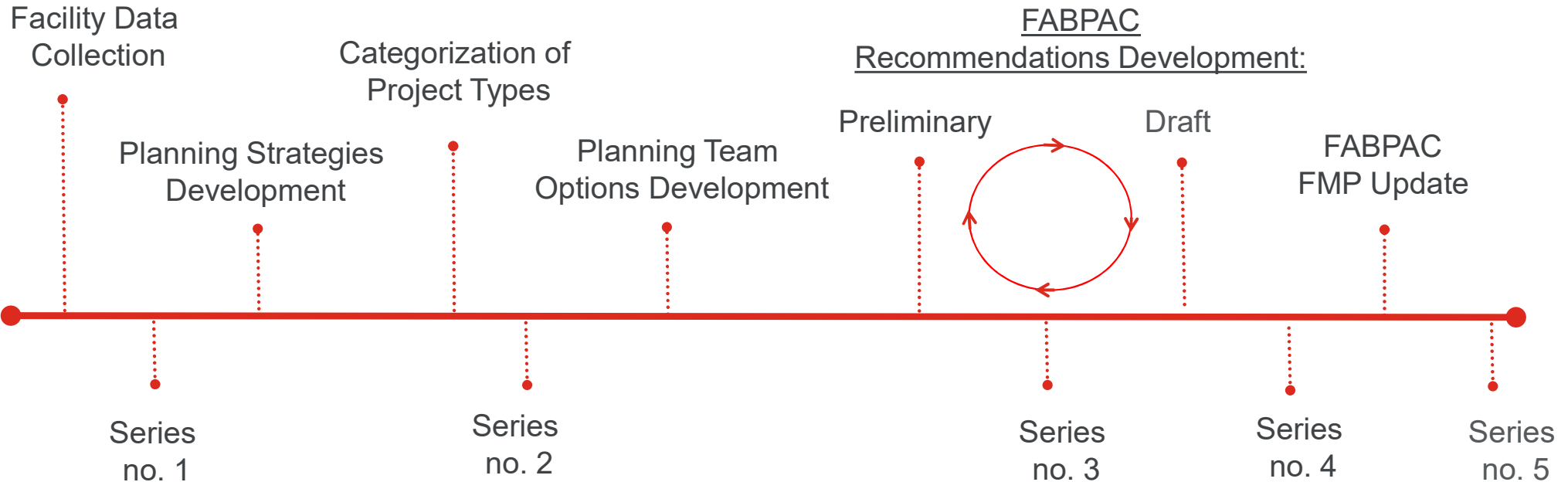
10:01 AM - 30 Jan 2017

Collaboration Vehicles & Methods

- Meetings: regionally convenient, not regionally exclusive
- Roadshows & Ambassadors: bring the conversation to stakeholders
- Digital engagement: Twitter Town Halls, website, videos
- Other:
 - Branding & accessibility
 - Get the topic on agendas
 - Track feedback & touchpoints



2016 FMP Update - Key Differentiators



“Some people may not have liked some of the outcomes but they agreed and respected the process”



#AISDFuture — Building it Together

LearningSCAPES Conference 2018 – A4LE




BRAILSFORD & DUNLAVEY

Break Out Time



Round Table Discussion


- Table 1: Planning Strategies & Approach
 - Table 2: ‘ Modernization’& Projects Recommendations
 - Table 3: Communications & Engagement
- 
- 20-Minute Rotations
- Hands-on Activities
& Discussion

#AISDFuture — Building it Together

LearningSCAPES Conference 2018 – A4LE



BRAILSFORD & DUNLAVEY

A photograph of a modern school building with a large glass entrance and a covered walkway supported by white columns. The building has a mix of concrete and metal siding. The text "Discussion & Questions" is overlaid in red on the image.

Discussion
& Questions

Discussion – Guiding Questions

- **Topic 1: Planning Strategies & Approach**

- With a variety of variables – how did you decide which schools were the worst and would go first?
- Can you talk about what it means that the FMP is a living document?
- How did you address equity?
- How did you deal with consolidations?
- If you were to redo the process, what would you have done differently?

Discussion - Guiding Questions

- **Topic 2: Modernization & Transformative Projects**
 - How did you come up with the modernization definition? What role did the Ed Specs play?
 - How did you handle the concern that modern just means more expensive?
 - How did FABPAC handle disagreements with recommendations?
 - How did data inform project recommendations and how were project recommendations prioritized overtime?
 - What were some of the biggest challenges and your biggest lessons learned?

Discussion - Guiding Questions

- **Topic 3: Communications & Engagement**
 - How did you manage principal engagement?
 - How did you involve hard to reach populations?
 - How were consultants and staff utilized throughout the process?
 - How did you manage explaining project recommendations to the community?
 - What were some of the biggest challenges and your biggest lessons learned?

#AISDFuture — Building it Together

LearningSCAPES Conference 2018 – A4LE



BRAILSFORD & DUNLAVEY

Contact information:

Wrap Up
&
Thank You!

Beth Penfield:
Bpenfield@programmanagers.com

Beth Wilson:
beth.wilson@austinisd.org

Ty Taylor:
ttaylor@programmanagers.com

#AISDFuture — Building it Together

LearningSCAPES Conference 2018 – A4LE



BRAILSFORD & DUNLAVEY

A photograph of a modern school building with a large glass facade and a covered entrance area supported by white columns. The building has a mix of grey concrete and blue-tinted glass panels. The text "Other questions for the panel?" is overlaid in large red letters.

Other questions
for the panel?