

I believe your bathrooms will become a prototype for school bathroom design in the future.

But I need your help.

I'd like to ask you some questions about your bathrooms.

Will you help me?



Inclusive Restrooms:

A Comprehensive Analysis, Design, + Code Compliance Guide to Inclusive & Gender Specific Restrooms in K-12 Schools

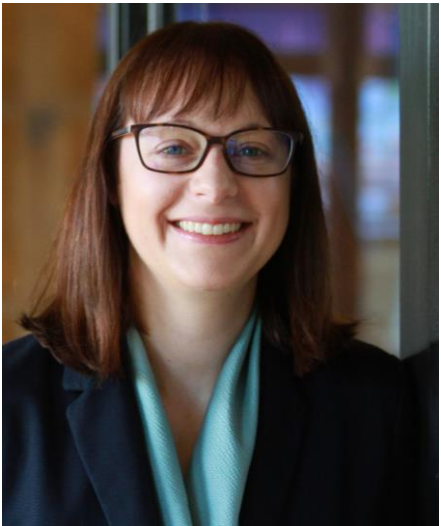




Angela Selb-Sack

Senior Project Manager, Facilities

angela.selb-sack@spps.org



Heidi Neumueller, AIA, LEED AP

Associate, Cuningham Group

hneuemueller@cunningham.com

Agenda

- 01** What are Inclusive Restrooms?
- 02** How are they designed?
- 03** Building Code + Inclusive Restrooms
- 04** Who was engaged in the process?
- 05** The Urinal Discussion
- 06** Year 1: Security and Safety Survey @ Johnson HS
- 07** Discussion + Questions

Learning Objectives

Learning Objective 1:

Participants will be able to identify the key design components of inclusive restroom design.

Learning Objective 2:

Participants will review which design components contribute to students' feelings of safety and security based on research study.

Learning Objective 3:

Participants will be able to define the code requirements for restrooms in educational facilities and enumerate alternative code compliance methods at St. Paul Public Schools.

Learning Objective 4:

Participants will learn the process of community and student engagement in designing inclusive restrooms at St. Paul Pubic Schools.

Key Design Components

1. Location
2. Visibility + Openness
3. Full Height Walls, Doors, and Hardware
4. Mechanical, Electrical, and Plumbing

VISIBILITY + OPENNESS

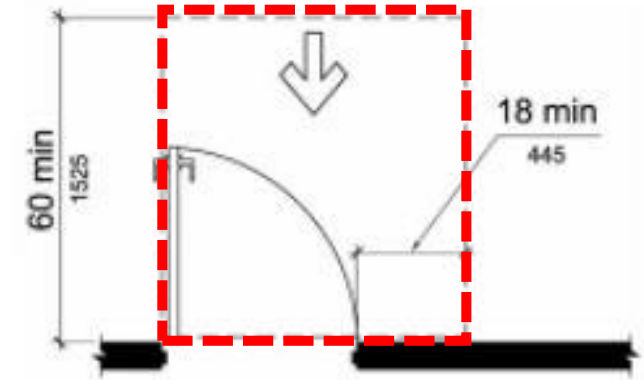
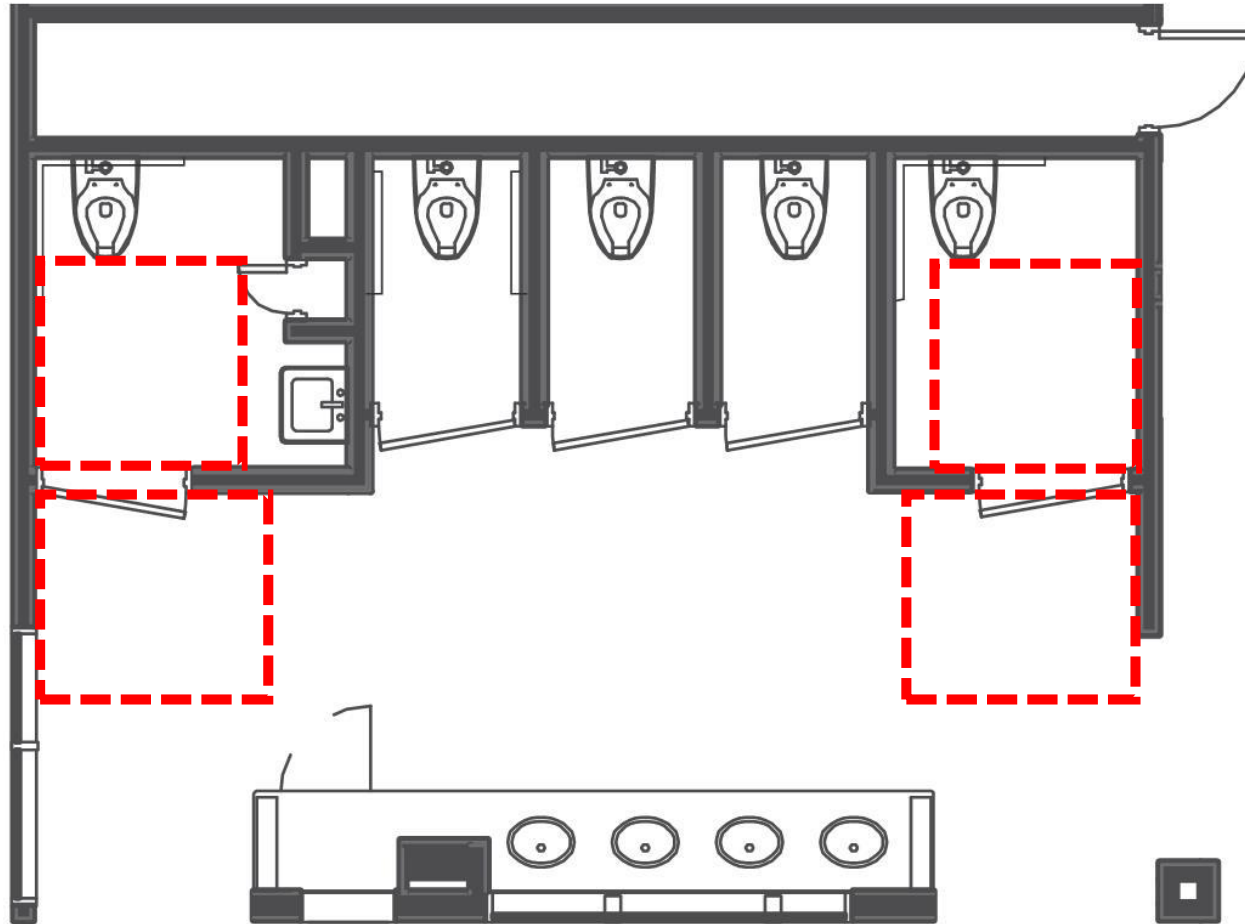


Saint Anthony Park Elementary School

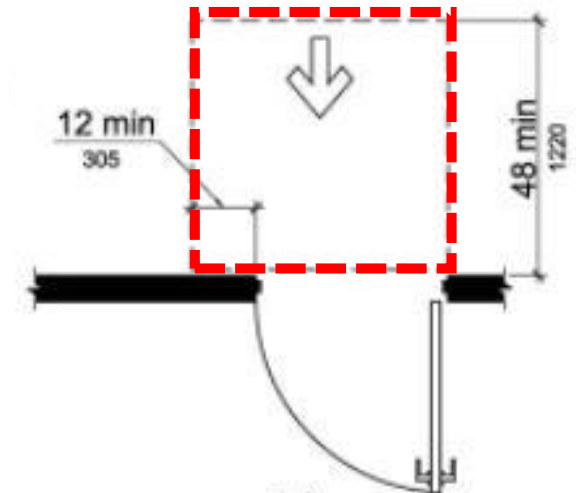
REACHING ALTERNATIVE CODE COMPLIANCE AT SPPS

1. Accessible Routes
2. Accessibility
3. Separate Facilities
4. Signage

CHAPTER 4: ACCESSIBLE ROUTES

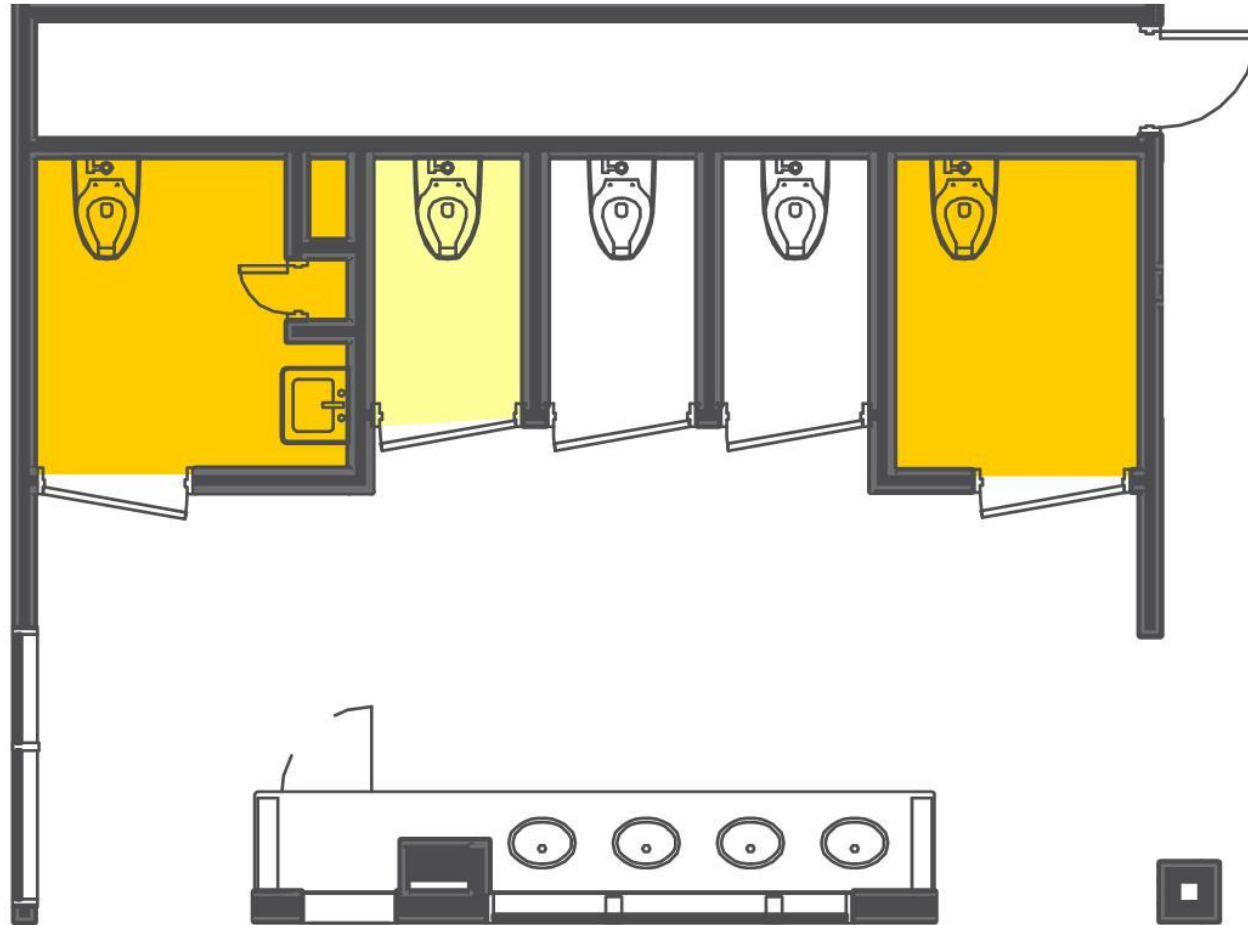


(a)
front approach, pull side



(c)
front approach, push side, door
provided with both closer and latch

CHAPTER 11: ACCESSIBILITY, E OCCUPANCY



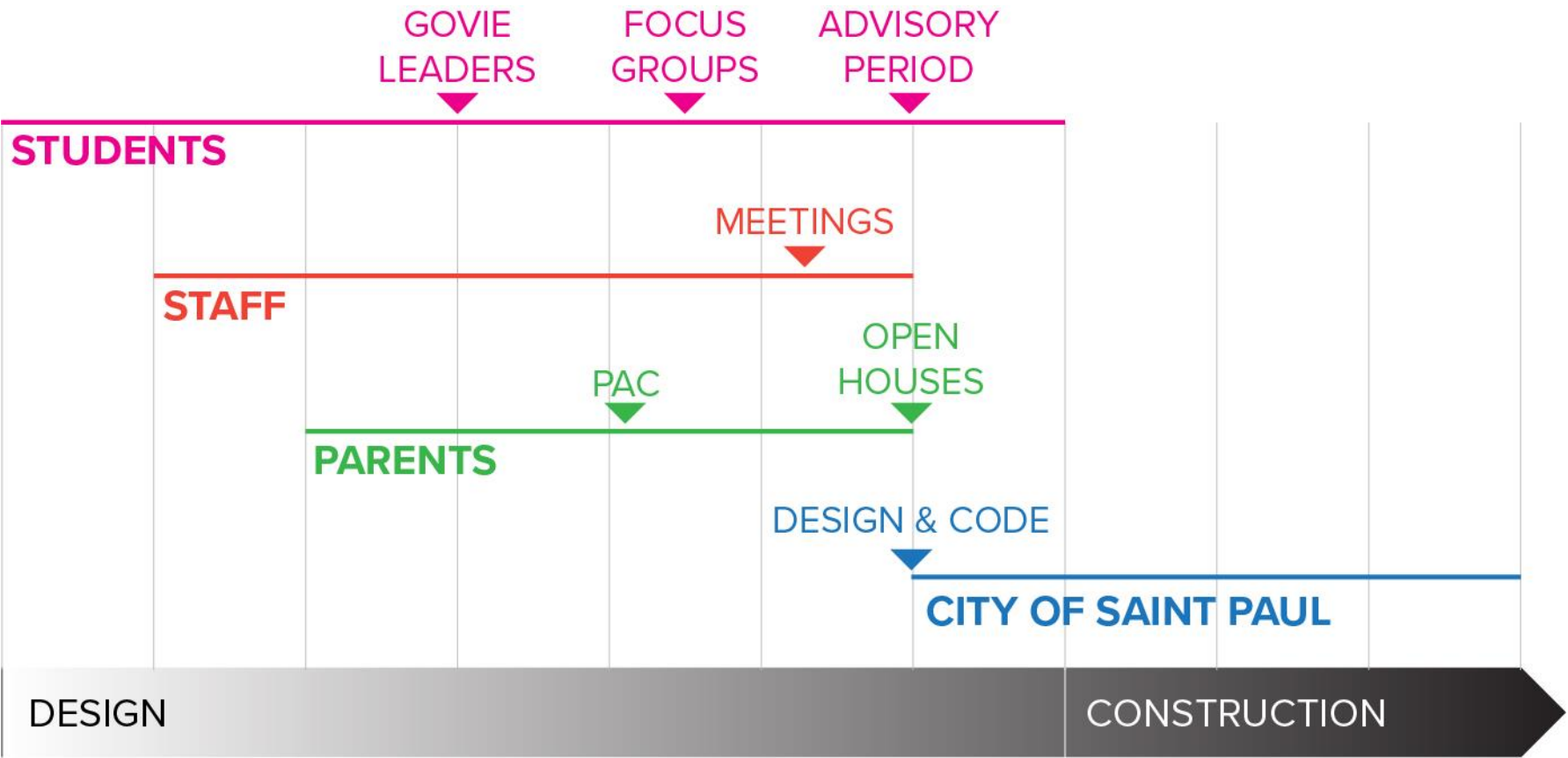
Accessible

Ambulatory

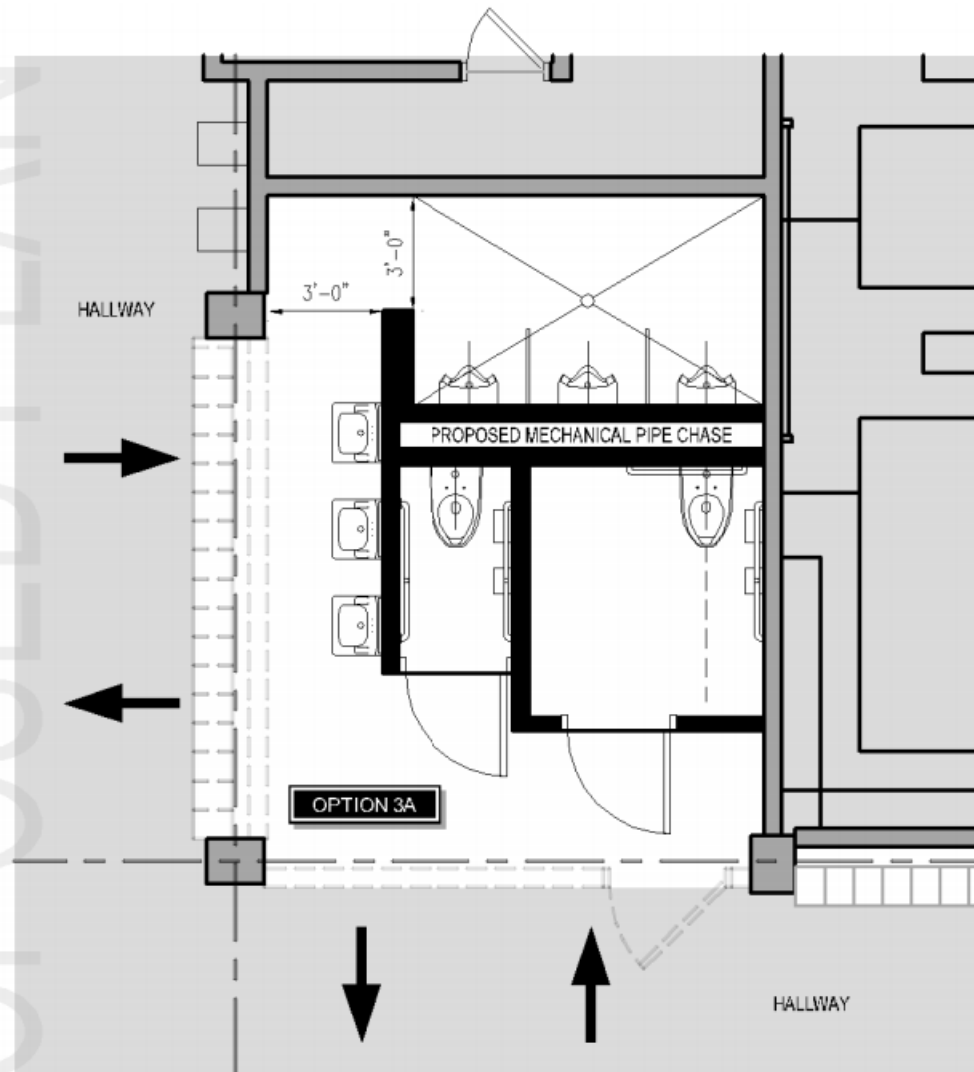
CHAPTER 29: SIGNAGE



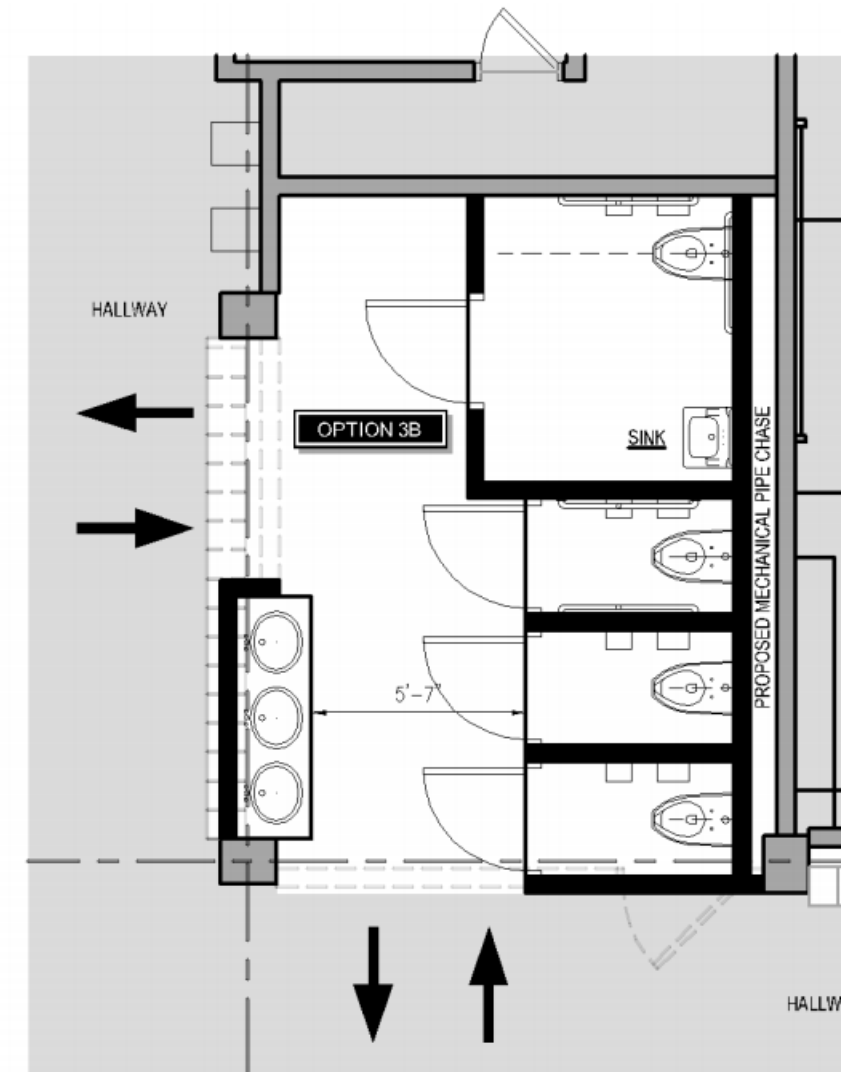
DESIGN PROCESS



PROPOSED PLAN



3 | LOCALIZED FIXTURE LAYOUT
A | RESTROOM 2202 FULL DEMOLITION



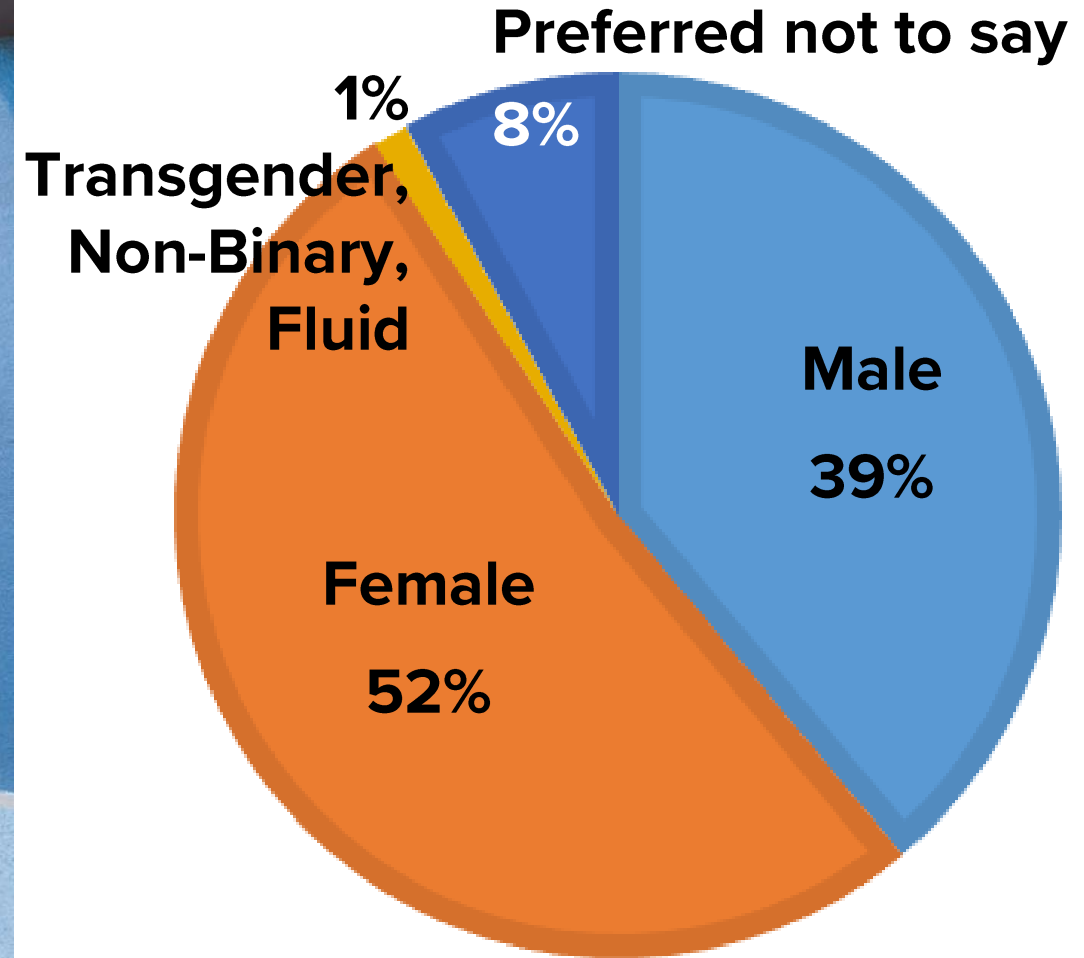
3 | FIXTURES @ OPPOSITE WALLS
B | RESTROOM 2202 FULL DEMOLITION

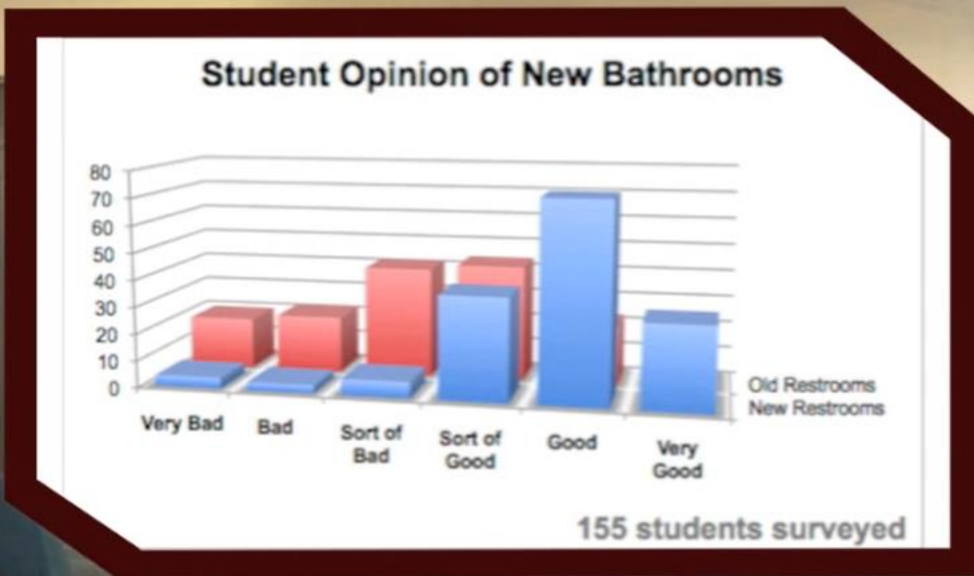
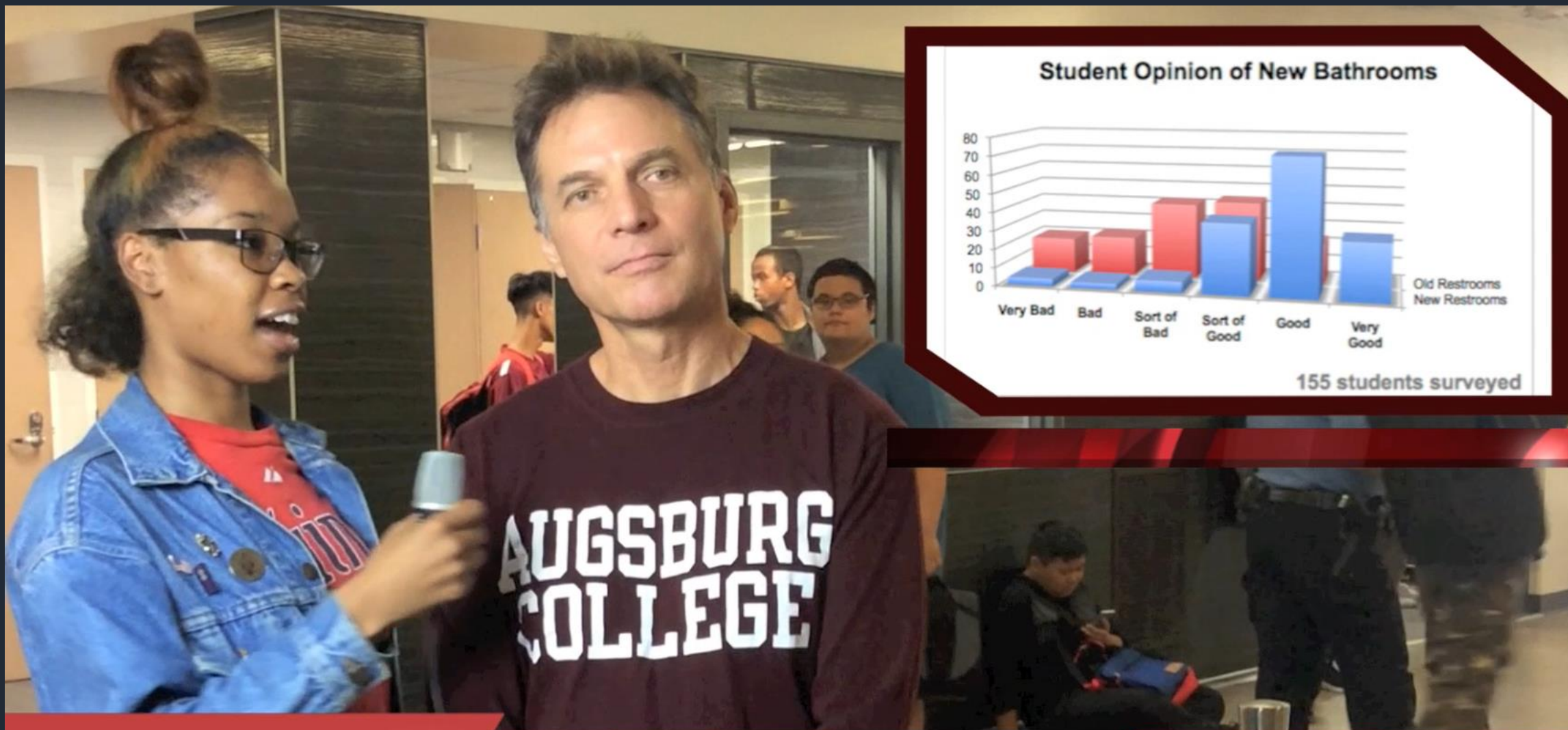
POST-OCCUPANCY SURVEY

Building Complete: 2016

Survey: December 2018

Nearly 800 responses





Reporter Hailey - Students think new bathrooms are better!