

# LEGAT ARCHITECTS

SUSTAINABILITY | PERFORMANCE | DESIGN

## How Buildings Teach Kindness; Inspiring Social Emotional Learning in an Illinois School District That Chooses Kindness as Their Mission



*Every Student. Every Day.*



**Dr. John Butts**  
Superintendent, Medinah SD 11



**Susan Redell**  
Director of Learning



**Loren Johnson**  
Architect, Legat Architects



**Robin Randall**  
Principal, Legat Architects



Medinah School District 11

**LEGAT**ARCHITECTS  
DESIGN | PERFORMANCE | SUSTAINABILITY

1. Introduction
2. SEL
3. Workshop – Empathy and Interviews
4. Kindness
5. Workshop – Design and Iteration
6. Conclusion



# Medinah Chooses KIND



*Every Student. Every Day.*



Medinah School District 11

**LEGAT**ARCHITECTS  
DESIGN | PERFORMANCE | SUSTAINABILITY





Medinah School District 11

**LEGAT**ARCHITECTS  
DESIGN | PERFORMANCE | SUSTAINABILITY

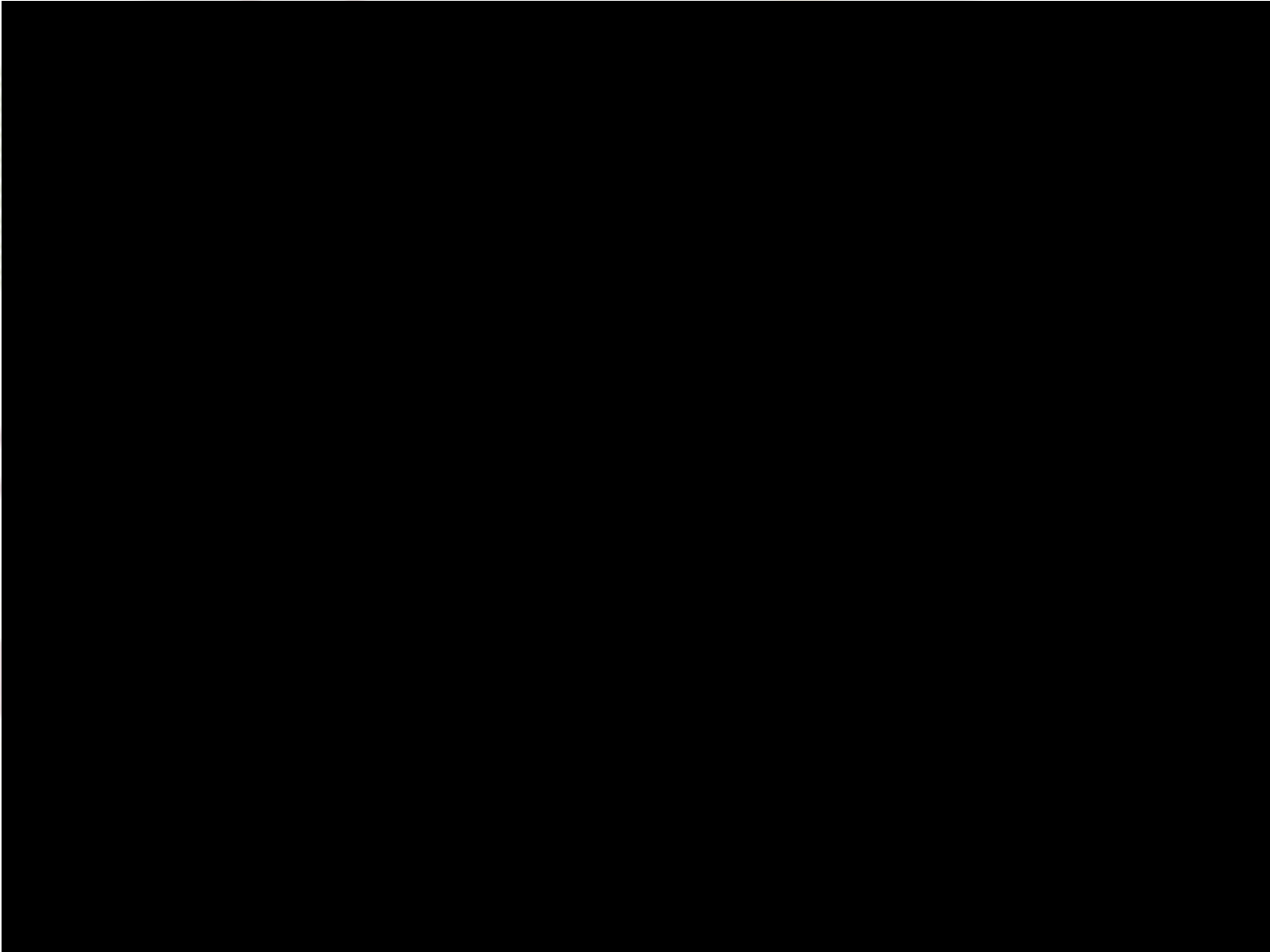




Medinah School District 11

**LEGAT**ARCHITECTS  
DESIGN | PERFORMANCE | SUSTAINABILITY

# VIDEO – What is S.E.L.?



Medi

ARCHITECTS  
PERFORMANCE | SUSTAINABILITY

# Social Emotional Learning





# WHAT IS SOCIAL AND EMOTIONAL LEARNING?



Outcomes Associated with the Five Competencies

## SEL Approaches

- Explicit Social and Emotional Skills Instruction
- Integration with Academic Curriculum Areas
- Teacher Instructional Practices

Social and Emotional Skill Acquisition: Five Competence Areas

Improved Attitudes about Self, Others, and Schools

Positive Social Behavior

Fewer Conduct Problems

Less Emotional Distress

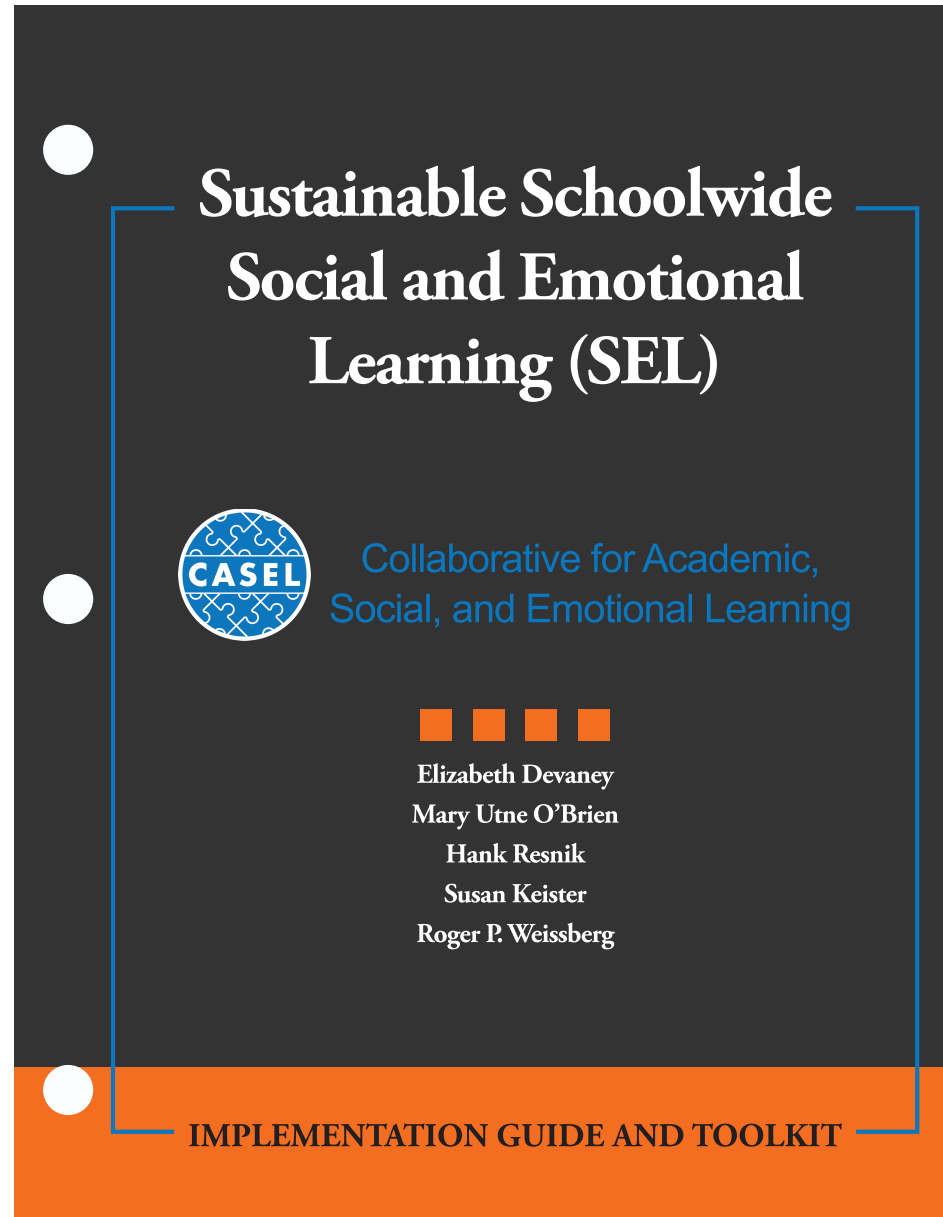
Academic Success



Medinah School District 11



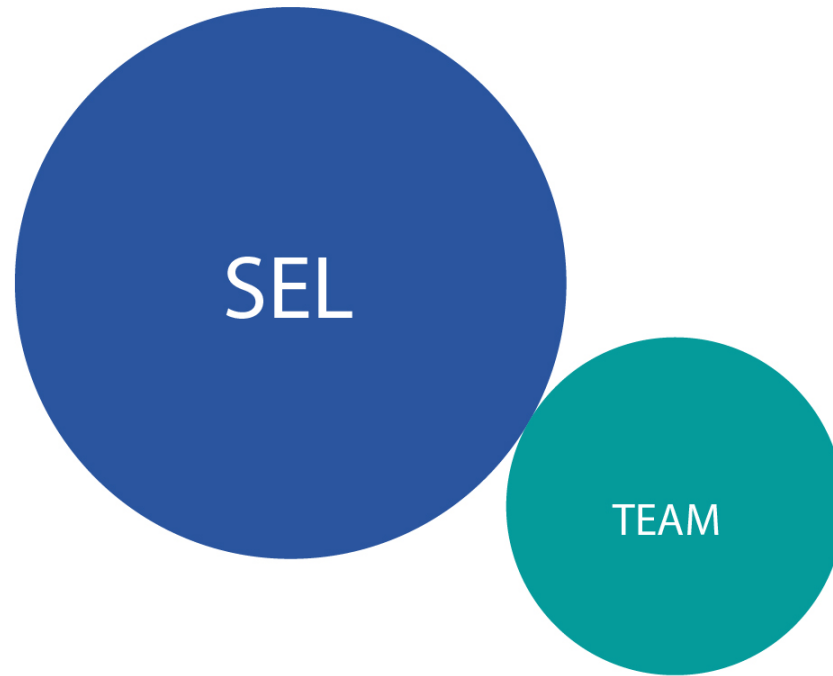
Medinah School District 11





Medinah School District 11

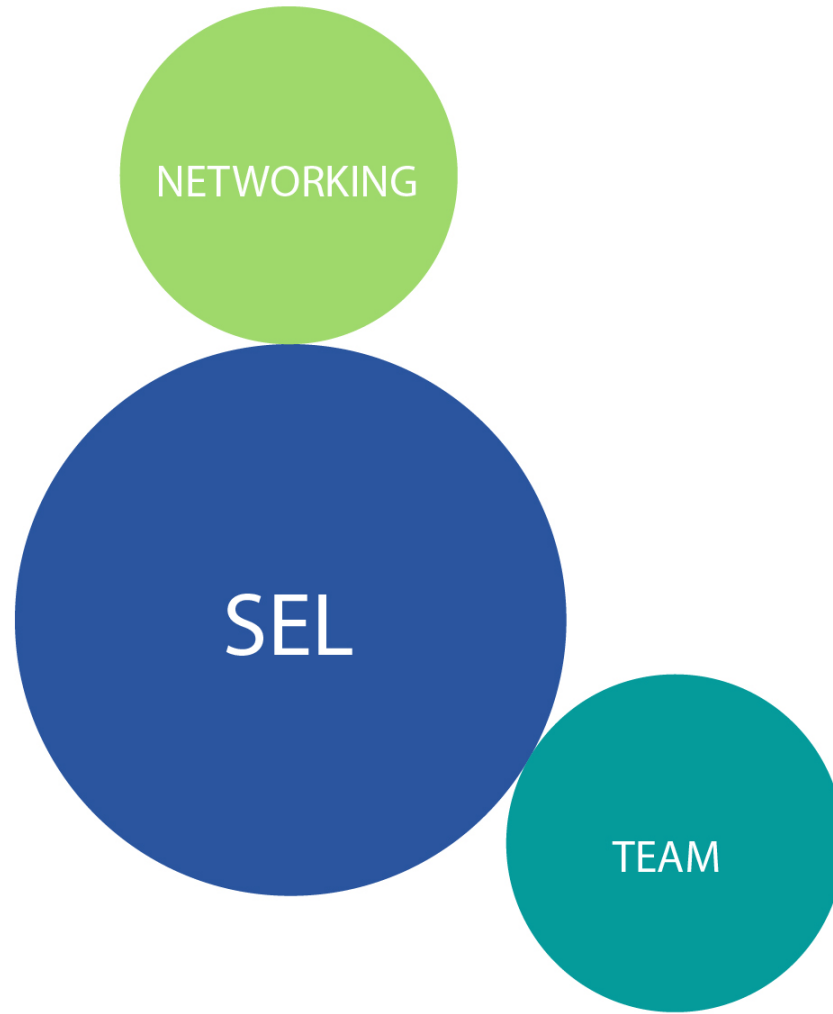
**LEGAT**ARCHITECTS  
DESIGN | PERFORMANCE | SUSTAINABILITY



Medinah School District 11

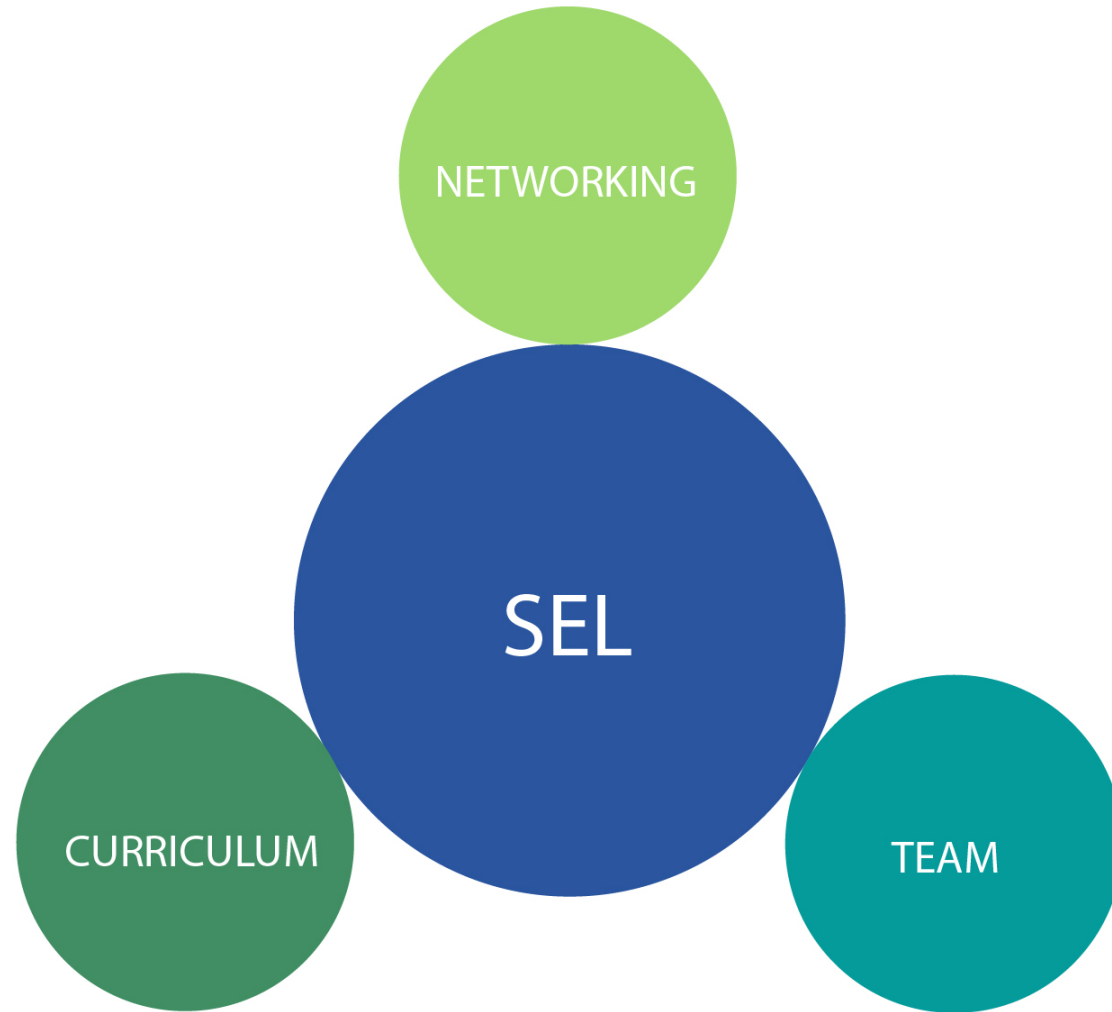
**LEGAT**ARCHITECTS  
DESIGN | PERFORMANCE | SUSTAINABILITY

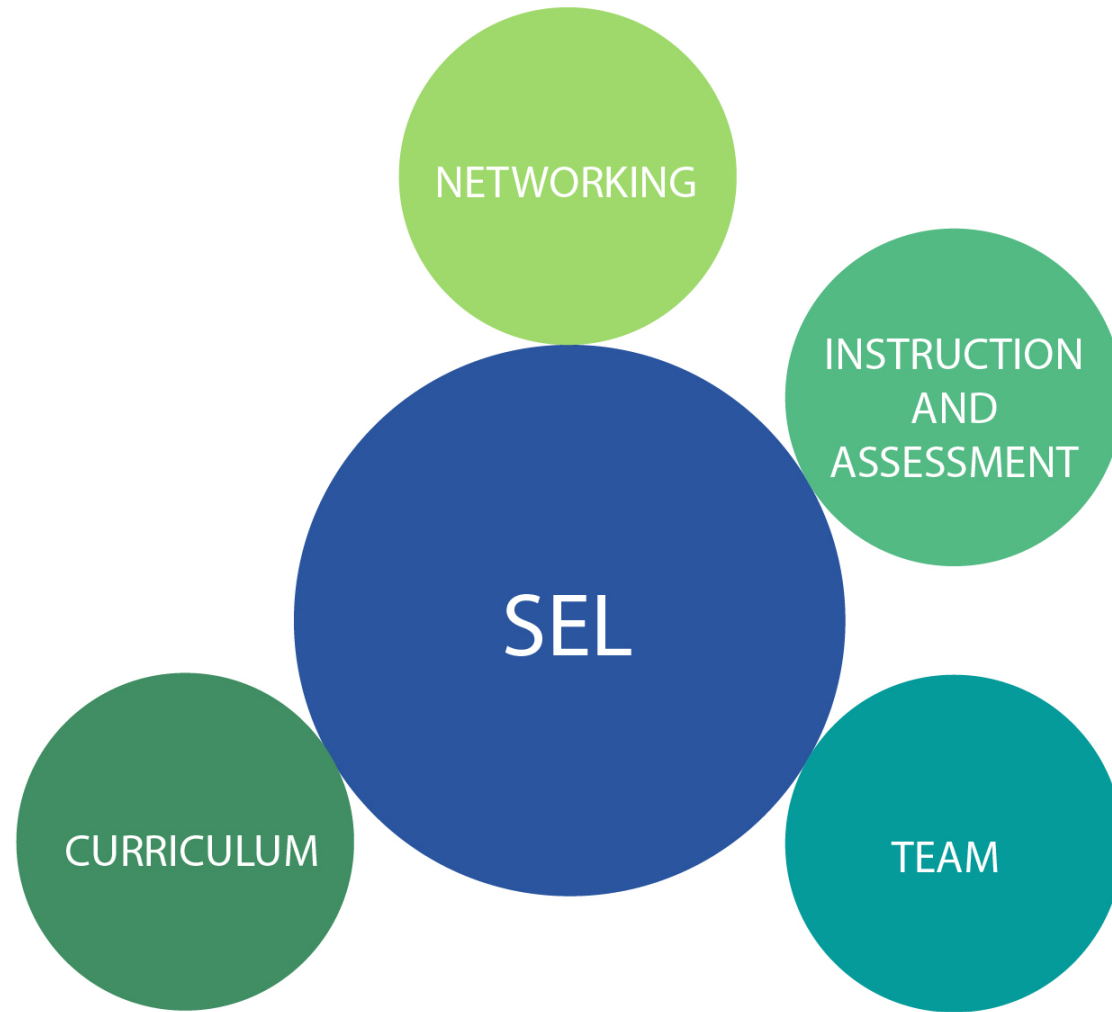




Medinah School District 11

**LEGAT**ARCHITECTS  
DESIGN | PERFORMANCE | SUSTAINABILITY







Medinah School District

**LEGAT**ARCHITECTS  
DESIGN | PERFORMANCE | SUSTAINABILITY



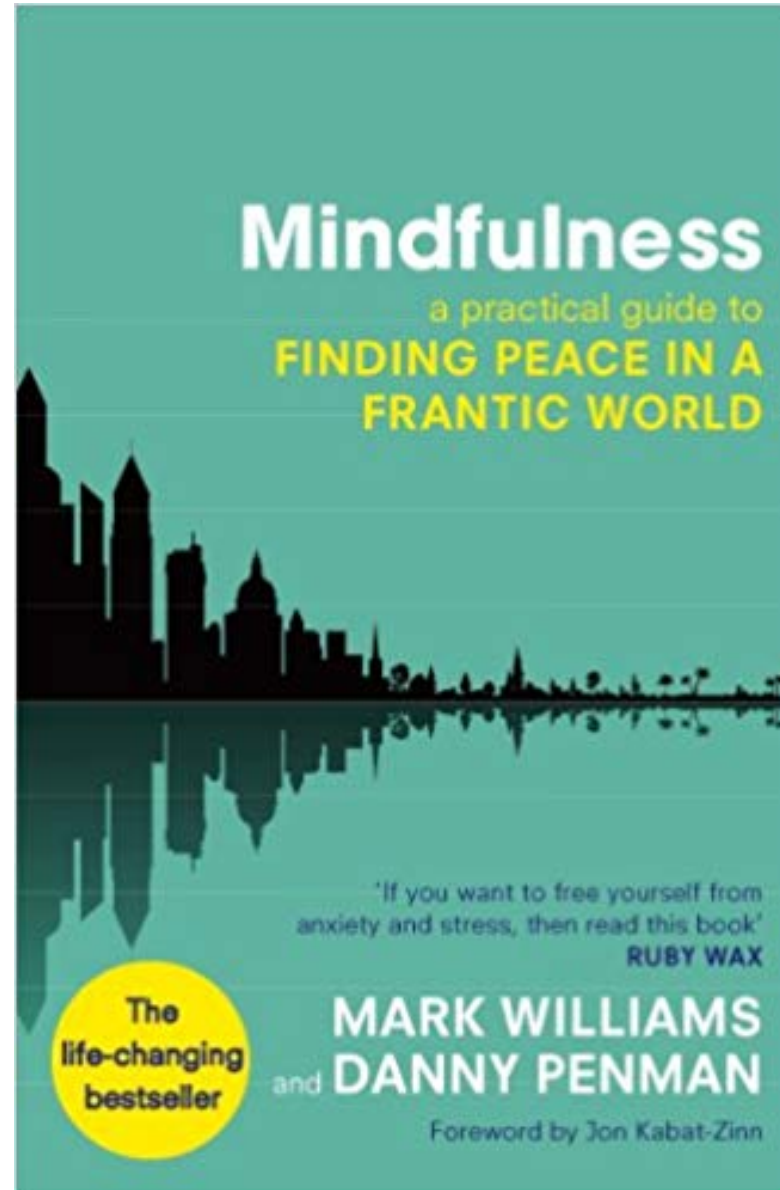


Medinah School District

**LEGAT**ARCHITECTS  
DESIGN | PERFORMANCE | SUSTAINABILITY



- Mindfulness
- Empathy
- Readings with staff and parents

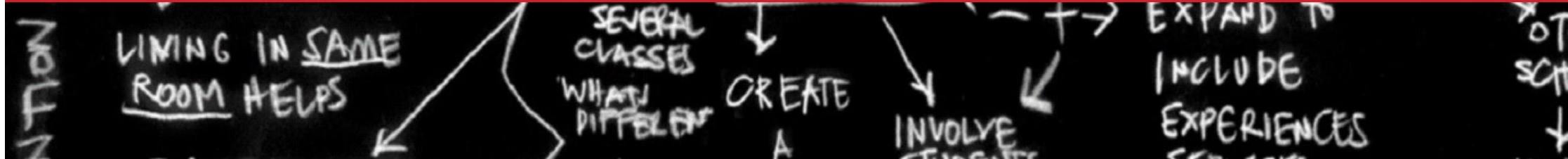


Medinah School District 11

**LEGAT**ARCHITECTS  
DESIGN | PERFORMANCE | SUSTAINABILITY



# An Introduction to Design Thinking





# Design the IDEAL space for listening to Music.

**Draw** 3 min

Sketch your idea here!

d. 



Medinah School District 11

**LEGAT**ARCHITECTS  
DESIGN | PERFORMANCE | SUSTAINABILITY

Your  
Mission: Create a USEFUL and MEANINGFUL experience for your partner.  
Start by gaining **empathy**.

**1 Interview** 8 min (4 min each)

Notes from your first interview



Switch roles & repeat Interview

**2 Dig deeper** 8 min (4 min each)

Notes from your second interview

Switch roles & repeat Interview



Medinah School District 11

**LEGAT**ARCHITECTS  
DESIGN | PERFORMANCE | SUSTAINABILITY

# Reframe the problem.

## 3 Capture findings 4 min

**needs:** things they are trying to do\*

\*use verbs

**insights:** new learnings about your partner's feelings/  
worldview to leverage in your design\*

\*make inferences from what you heard

## 4 Define problem statement 3 min



\_\_\_\_\_

name

needs a way to

\_\_\_\_\_

user's need

**Unexpectedly, in his/her world,**

\_\_\_\_\_

insight

d. A Creative Commons license icon showing a person, a gear, and a crossed-out dollar sign, indicating a BY-NC-SA license.



Medinah School District 11

**LEGAT**ARCHITECTS  
DESIGN | PERFORMANCE | SUSTAINABILITY

*“Research is formalized curiosity. It is poking and prying with purpose.”*

*Zora Neale Hurston*  
- Zora Neale Hurston



Medinah School District 11

**LEGAT**ARCHITECTS  
DESIGN | PERFORMANCE | SUSTAINABILITY





EXPOSURE

*I am not a teacher, but an awakener.*  
-Robert Frost







Medinah School District 11

**LEGAT**ARCHITECTS  
DESIGN | PERFORMANCE | SUSTAINABILITY





Medinah School District 11

**LEGAT**ARCHITECTS  
DESIGN | PERFORMANCE | SUSTAINABILITY













# DIVERSITY

*He who is different from me does not impoverish me - he enriches me. Our unity is constituted in something higher than ourselves - in Man... For no man seeks to hear his own echo, or to find his reflection in the glass.*  
-Flight to Arras (Pilote De Guerre) Antoine de Saint-Exupery



Linguistic



Visual



Logical



Interpersonal



Musical



Body Kinesthetic



Intrapersonal



Naturalistic



Existential



Medinah

**LEGAT**AL  
DESIGN | PERFORMANCE

CTS  
ABILITY



Medinah School District 11

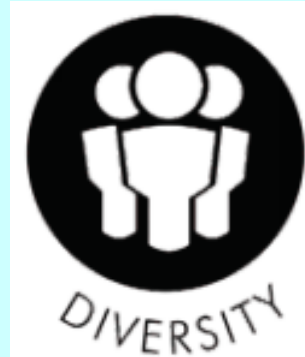
**LEGAT**ARCHITECTS  
DESIGN | PERFORMANCE | SUSTAINABILITY





*Medinah Old School House ~ circa 1903*

*Every Student. Every Day.*



**MISSION  
STATEMENT:**

*"Sharing  
responsibility with  
families and  
community, we  
will develop  
lifelong learners  
by providing a  
high quality  
education for  
every student,  
every day."*

**Medinah Chooses KIND**

*"Education is the most  
powerful weapon which you  
can use to change the world"*  
-Nelson Mandela



Medinah School District 11

**LEGAT**ARCHITECTS  
DESIGN | PERFORMANCE | SUSTAINABILITY



Medina

TS  
BILITY









## ADAPTABILITY

*The world as we have created it is a process of our thinking. It cannot be changed without changing our thinking. -Albert Einstein*







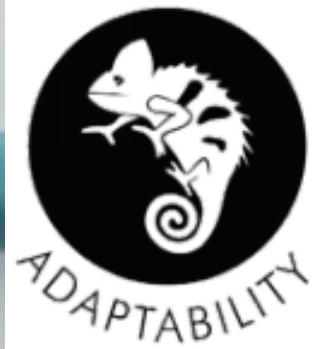
Medinah School District 11

**LEGAT**ARCHITECTS  
DESIGN | PERFORMANCE | SUSTAINABILITY













## INTERACTIVE

*We need the tonic of wildness...At the same time that we are earnest to explore and learn all things, we require that all things be mysterious and unexplorable, that land and sea be indefinitely wild, unsurveyed and unfathomed by us because unfathomable. We can never have enough of nature. -Henry David Thoreau, Walden*







Medinah School District 11

**LEGAT**ARCHITECTS  
DESIGN | PERFORMANCE | SUSTAINABILITY













## IMMERSION

*There is nothing in the world that is not mysterious, but the mystery is more evident in certain things than in others: in the sea, in the eyes of the elders, in the color yellow and in music. -Jorge Luis Borges*







Medinah School District 11

**LEGAT**ARCHITECTS  
DESIGN | PERFORMANCE | SUSTAINABILITY









**Ideate:** generate alternatives to test.

**5 Sketch 3-5 *radical* ways to meet your user's needs.** 5 min



write your problem statement above

**6 Share your solutions & capture feedback.** 10 min (5 min each)

Notes



Switch roles & repeat sharing.



Medinah School District 11

**LEGAT**ARCHITECTS  
DESIGN | PERFORMANCE | SUSTAINABILITY



# Iterate based on feedback.

## 7 Reflect & generate a new solution. 3 min

Sketch your big idea, note details if necessary!

d. 



Medinah School District 11

**LEGAT**ARCHITECTS  
DESIGN | PERFORMANCE | SUSTAINABILITY

# Build and test.

## 8 Build your solution.

Make something your partner can interact with!

[not here]

7 min

d. 

## 9 Share your solution and get feedback.

✚ What worked...

▣ What could be improved...

? Questions...

! Ideas...

8 min (4 min each)



Medinah School District 11

**LEGAT**ARCHITECTS  
DESIGN | PERFORMANCE | SUSTAINABILITY



# Reflections from the Workshop and Reflections moving forward

- Stakeholder involvement key from the start
  - BOE, parents, staff, administration
- Curriculum guide
  - Common vocabulary, consistency
- Listening and compromise
- Site visits
- We continue to redefine Kindness for the Environment
- Thanks for being part of the process!

