

REIMAGINING THE STUDENT EXPERIENCE

CAMPUS HISTORY



The Alamo Heights Independent School District, the heart of our community whose passion is excellence, will educate and empower every student to excel academically and as a confident, compassionate citizen with impeccable character and a global perspective through engaging, personally challenging, and relevant experiences that inspire learning for life.

STRATEGIC PLAN

STRATEGY 1

We will demand all learning be engaging, personally challenging, and relevant.

STRATEGY 2

We will aggressively confront the social and emotional issues of our community.

STRATEGY 3

We will close the achievement gap.

STRATEGY 4

We will create an environment where impeccable character is modeled by and expected of each individual.

STRATEGY 5

We will ensure a high-performing faculty and staff to accomplish our mission.

STRATEGY 6

We will create a culture of participation that ensures equitable access to academic and extra-curricular activities.

the most important factor to consider in planning for the future of AHISD is...

UTILIZATION OF SPACE TO CREATE A LEARNING ENVIRONMENT

to be Proactive instead of reactive

Students

Students

evolution

What fulfills the requirement of creating LIFELONG LEARNERS

All Students

Students

Diverse Needs of a Diverse Pop.

THE STUDENTS WE DON'T YET KNOW.

Do graduates have the ability to apply their learning in real situations

SOFTBALL CONCESSIONS

Make library 2-story

What if library stand alone so open all hours? maybe partner with city - \$ & staff. maybe meeting space. Leasable to community?

would be nice to consolidate still, still SB, still BB fields parking, pool & green spaces to include park areas for families and children - somehow collaborate spaces in creative way.



Improvements
Collaboration Spaces
Commons/Cafe
Turf Soccer Field
Turf Baseball Field
Turf Softball Field
Turf @ Football Field
Ice, Runways, Dees...
Parking

Facility Improvements
Security Fencing
Restrooms
Signage / Wayfinding
Existing Admin.
Don/Academic Addition
Kitchen/Cafeteria Union

mile done 2

- more locker room - all sports
- gym equipment
- concession/foyer enlarge
- coaches spaces
- storage space
- sound system
- New gym would be great
- lockers
- media space / film room

- Coaches mtg room
- footprint of court space
- bleachers
- lighting
- Multi-use room
- PE vs Athletics locker room
- 2nd story of mtg rooms and storage.

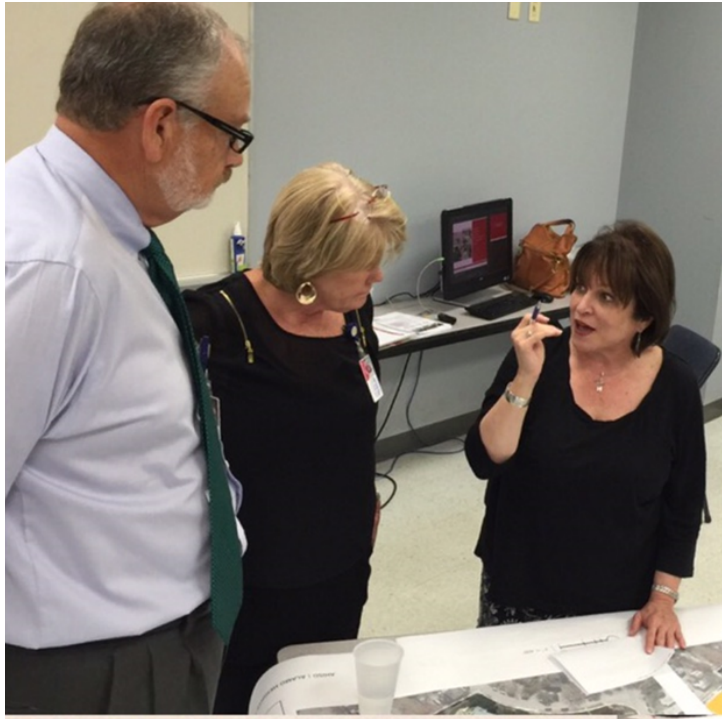
Explore property acquisitions

- BASEBALL
- MAIN BLDG FOR CONCESSIONS, BATHROOM, P.O. STORAGE, ETC
 - NEW BLEACHERS
 - SYN. TURF
 - ENLARGE DUGOUTS
 - ADDITIONAL PRACTICE ROOM
 - NEW/ADDITIONAL FENCING

- Weight Room
- open agility/jump training space
 - larger platform space
 - new equipment
 - cardio space



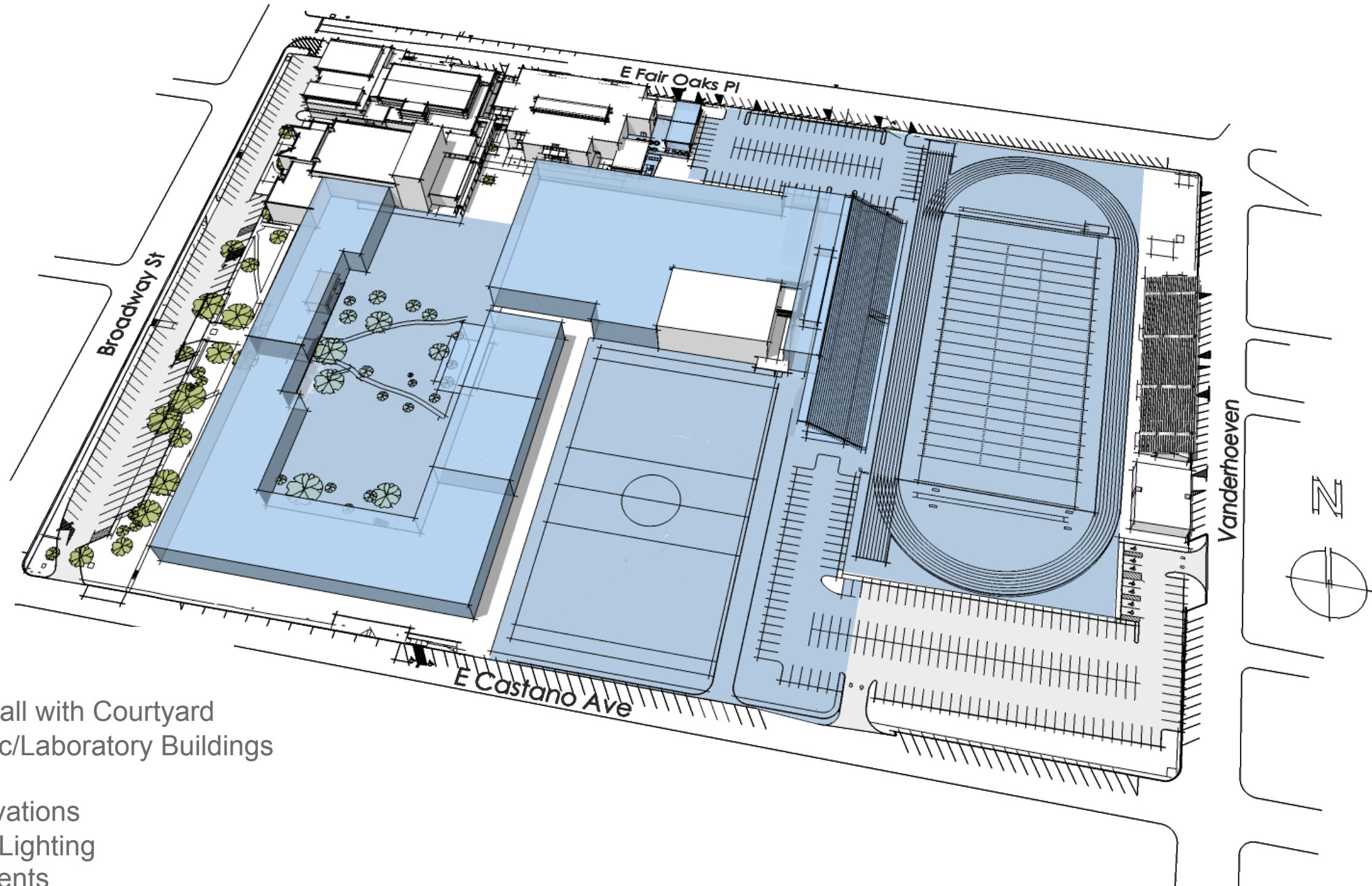
LPA



ALAMO HEIGHTS HIGH SCHOOL | MASTER PLAN

MASTER PLAN:

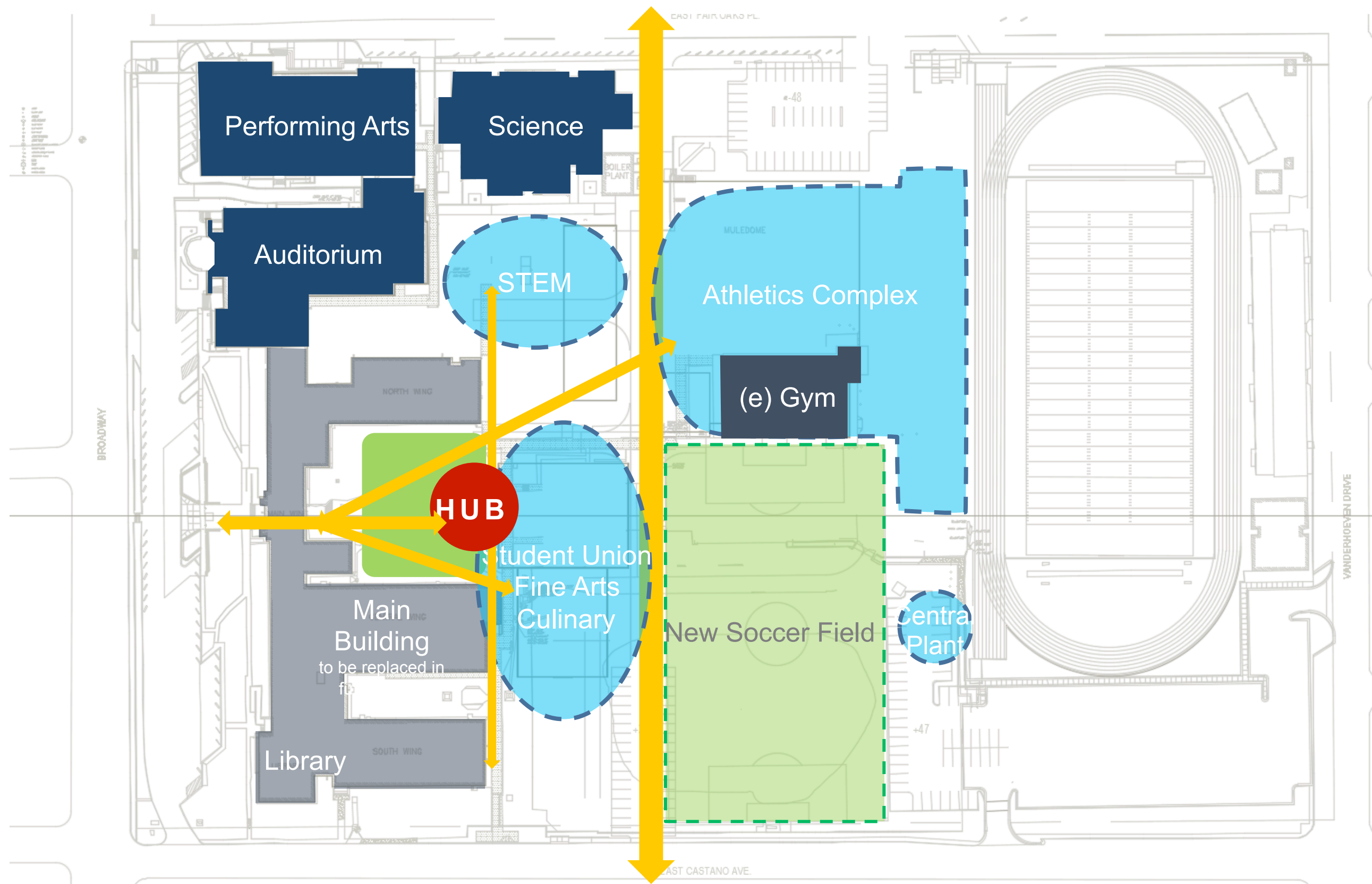
- New Stadium
- New Field House
- New Soccer Field
- New Kitchen/Dining Hall with Courtyard
- New Academic/Athletic/Laboratory Buildings
- New Central Plant
- Misc. Plumbing Renovations
- Security Fencing and Lighting
- Landscape Improvements



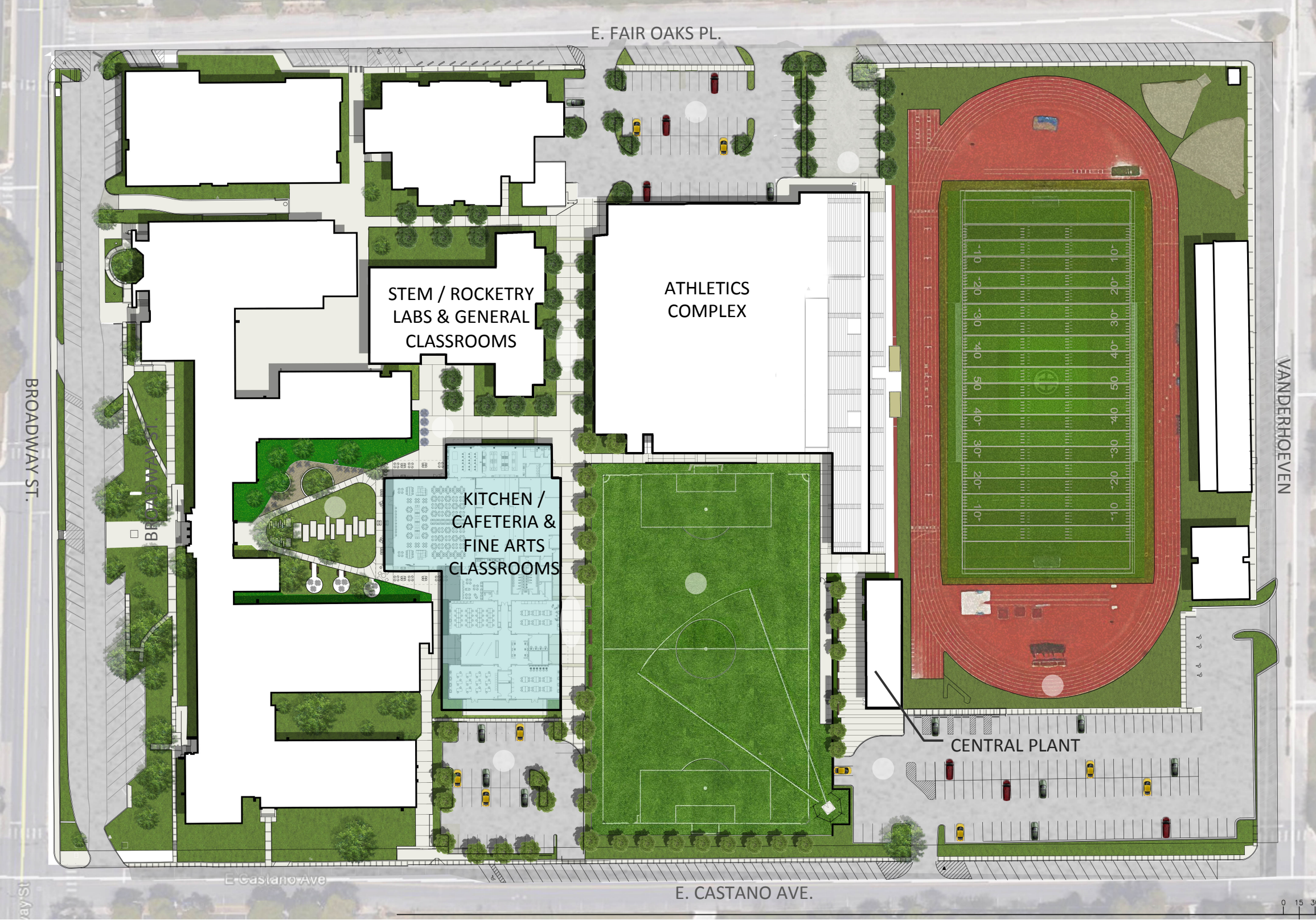
CAMPUS SOCIAL ACTIVITY EXISTING CONDITIONS



2017 BOND

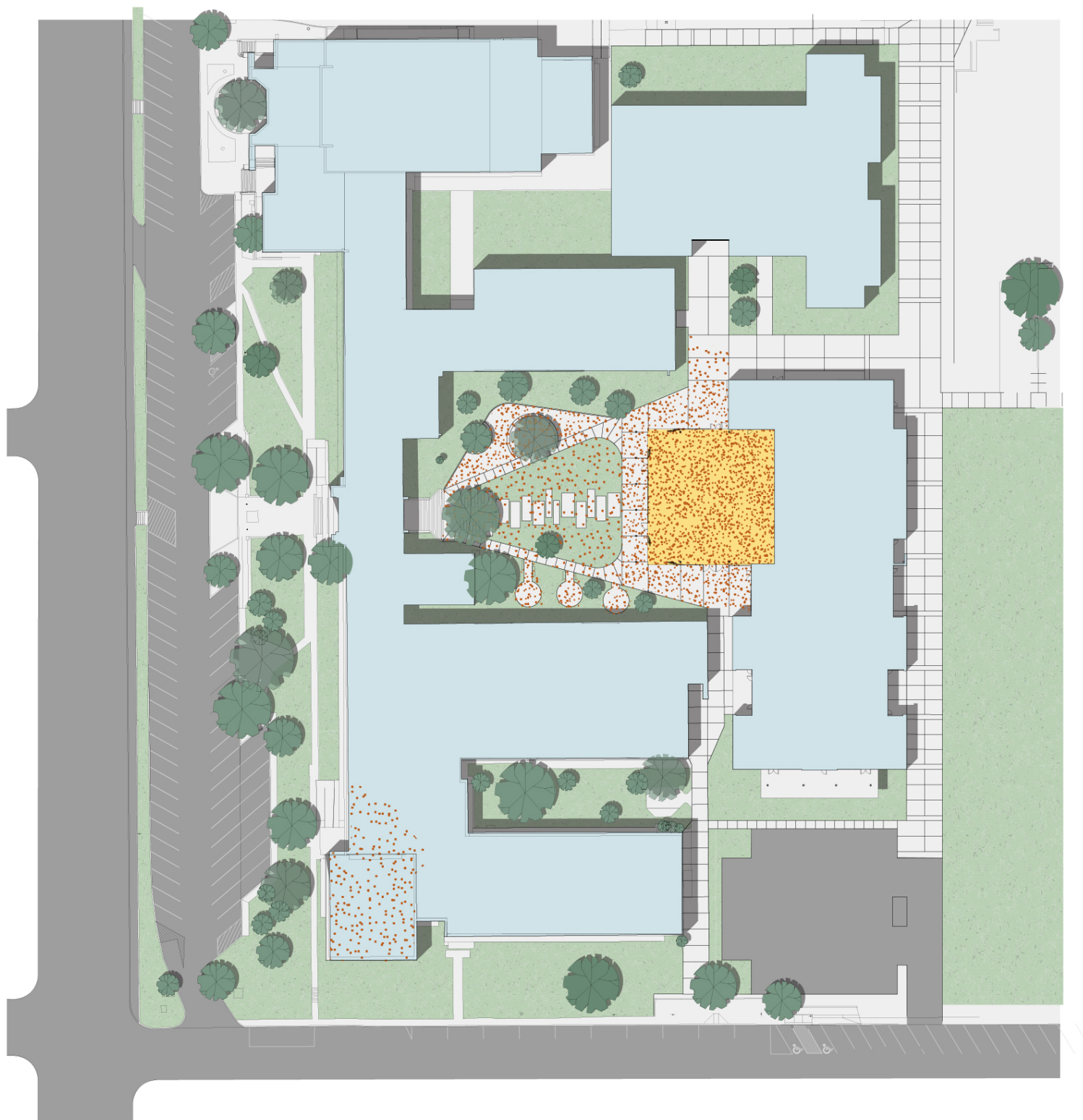


SITE PLAN ALAMO HEIGHTS HIGH SCHOOL



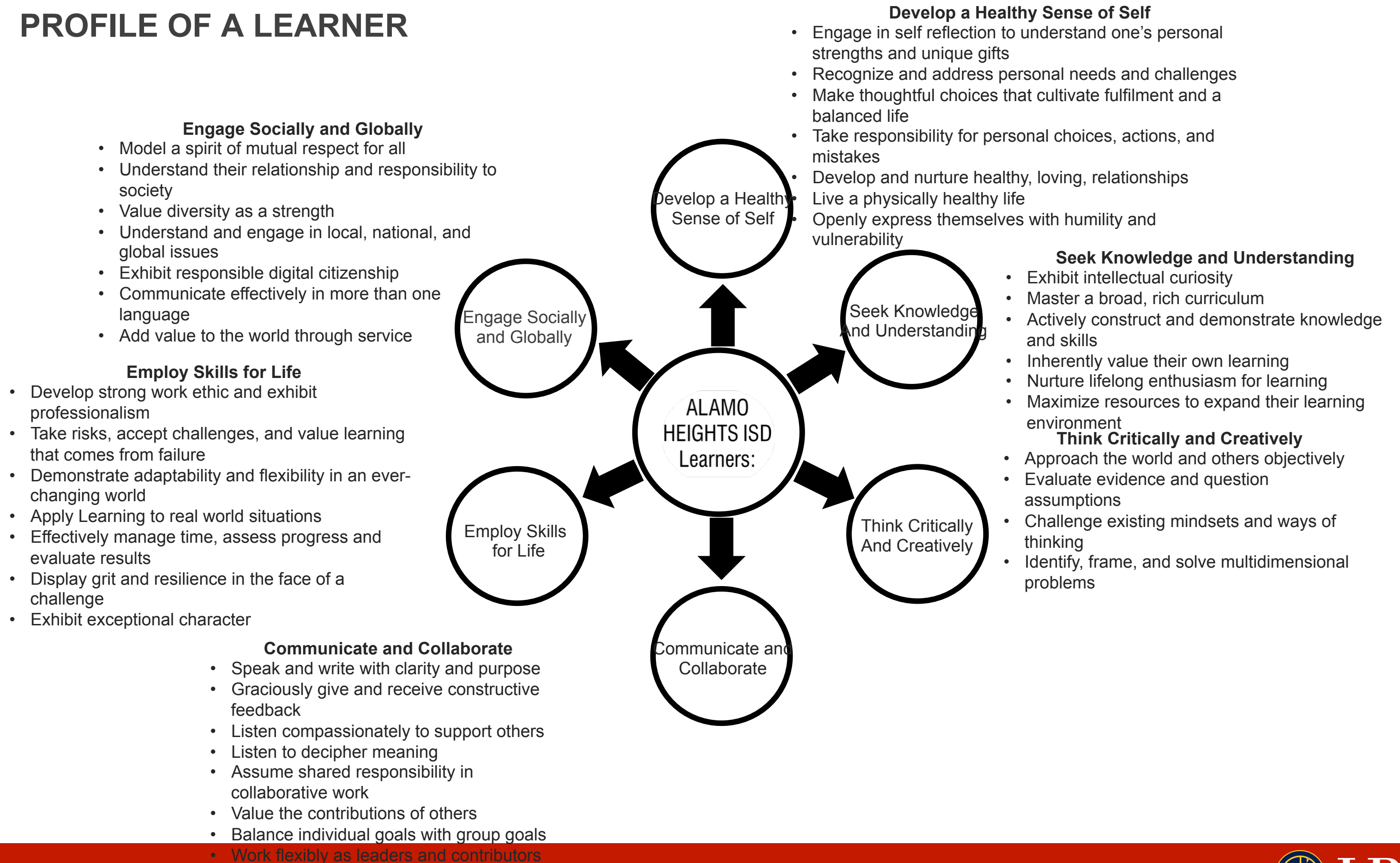
1. THE OAKS
2. STEM COURTYARD
3. NEW SOCCER FIELD
4. ADDITIONAL TRACK LANE
5. STADIUM ENTRANCES
6. ADDITIONAL PARKING
7. NEW CAMPUS DRIVE/FIRE LANES

CAMPUS SOCIAL ACTIVITY PROPOSED



GROUP ACTIVITY

PROFILE OF A LEARNER



EXTERIOR RENDERING COMMONS

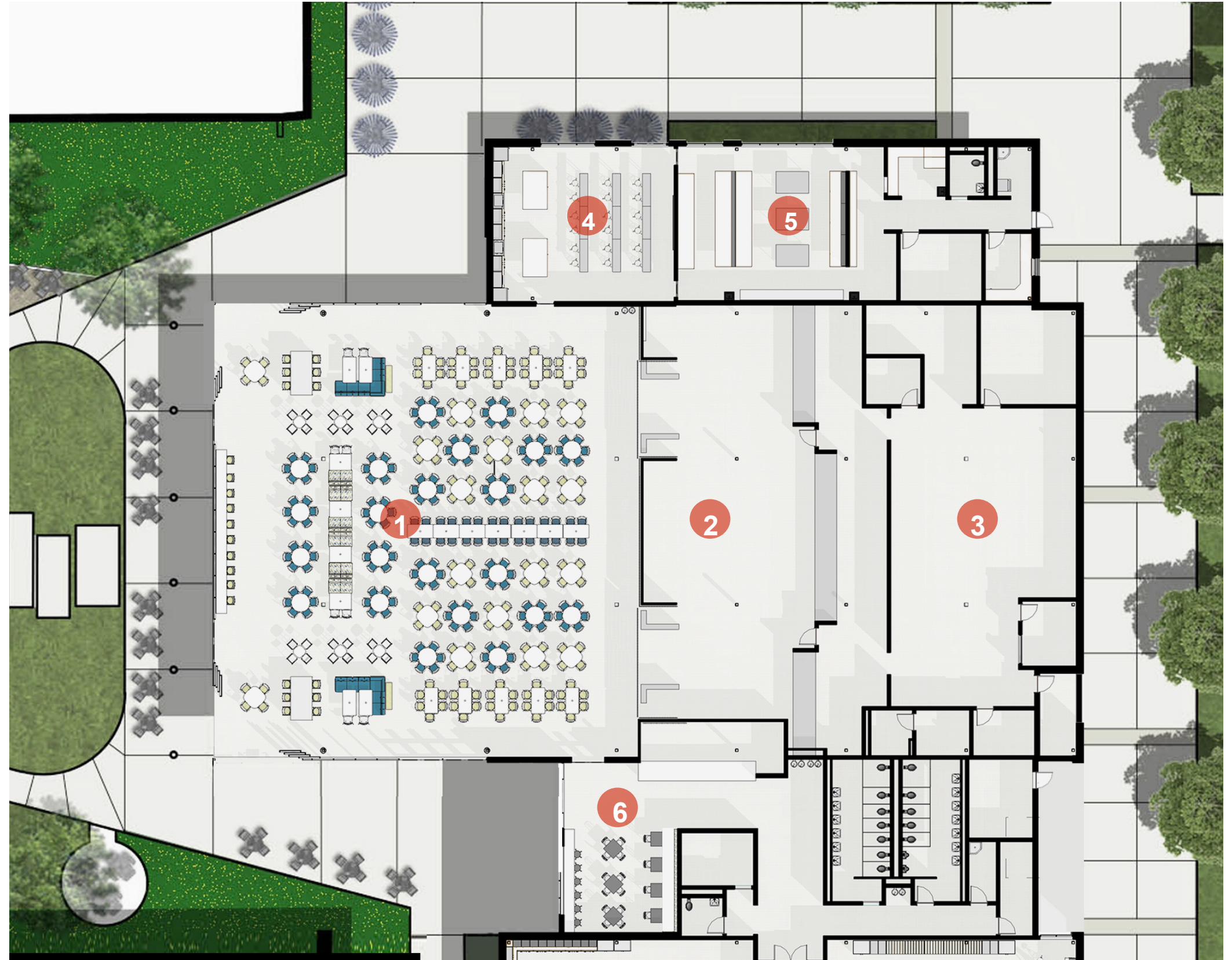


SITE SECTION COMMONS



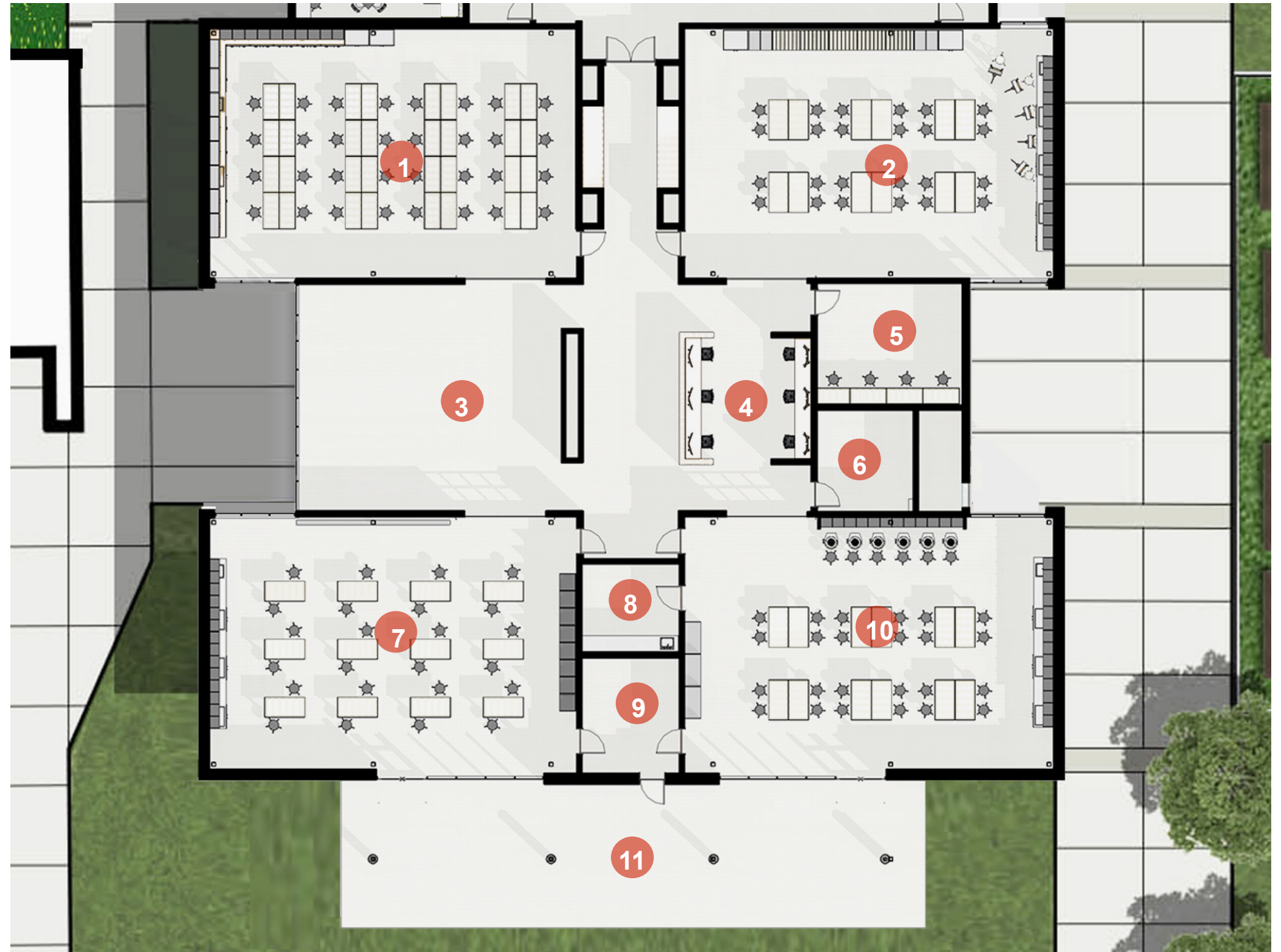
FLOOR PLAN COMMONS/CULINARY

1. COMMONS (378)
2. SERVING
3. KITCHEN
4. CHEF PROGRAM/
CLASSROOM
5. CULINARY ARTS
6. THE OAKS CAFÉ

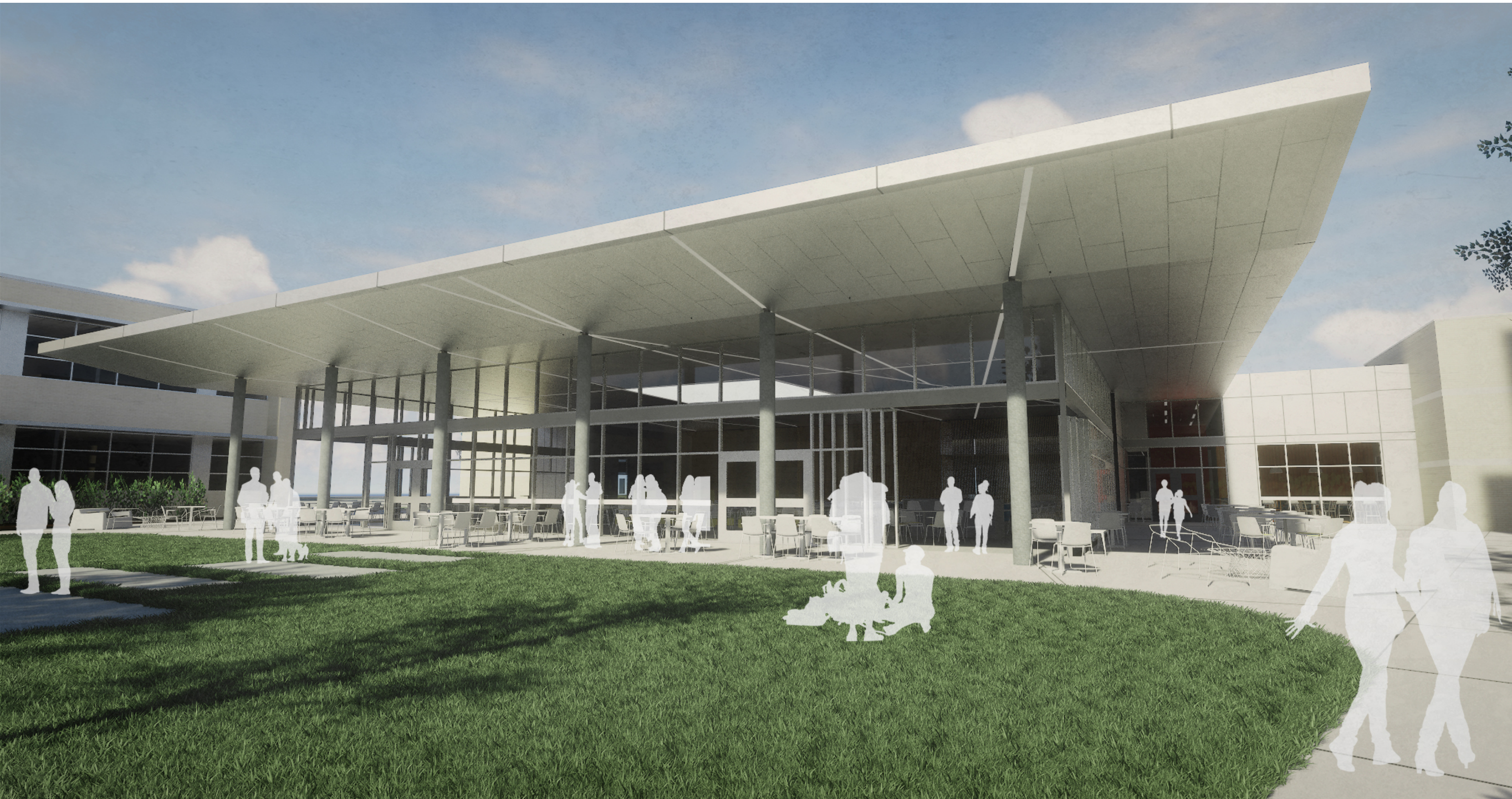


FLOOR PLAN ART

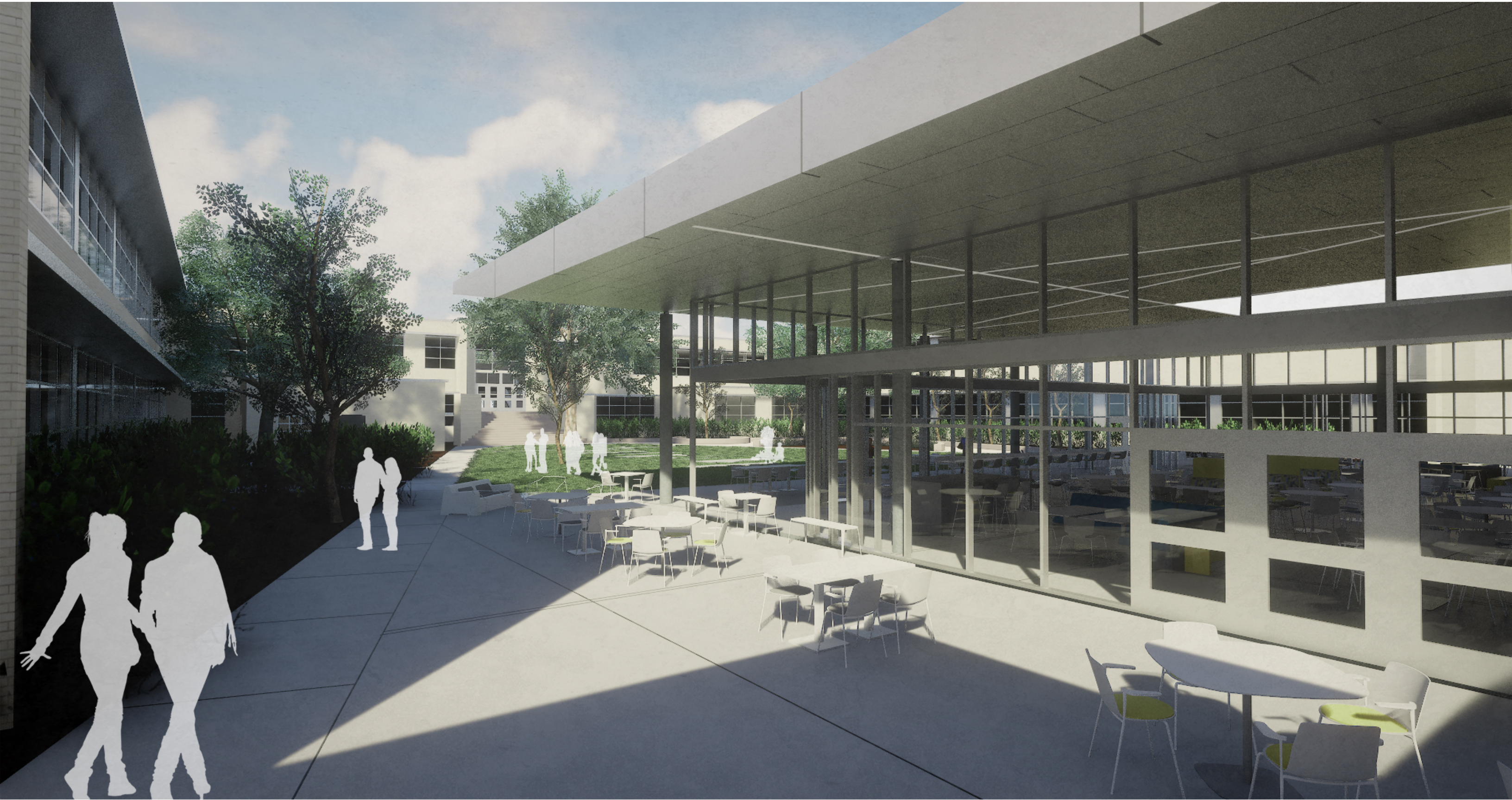
1. DIGITAL MEDIA
2. DRAWING AND PAINTING
3. ART FLEX SPACE
4. DIGITAL WORKSPACE
5. WORK ROOM
6. STORAGE
7. SCULPTURE
8. GLAZING
9. KILN
10. CERAMICS
11. SCULPTURE/CERAMICS PORCH



EXTERIOR RENDERING COMMONS



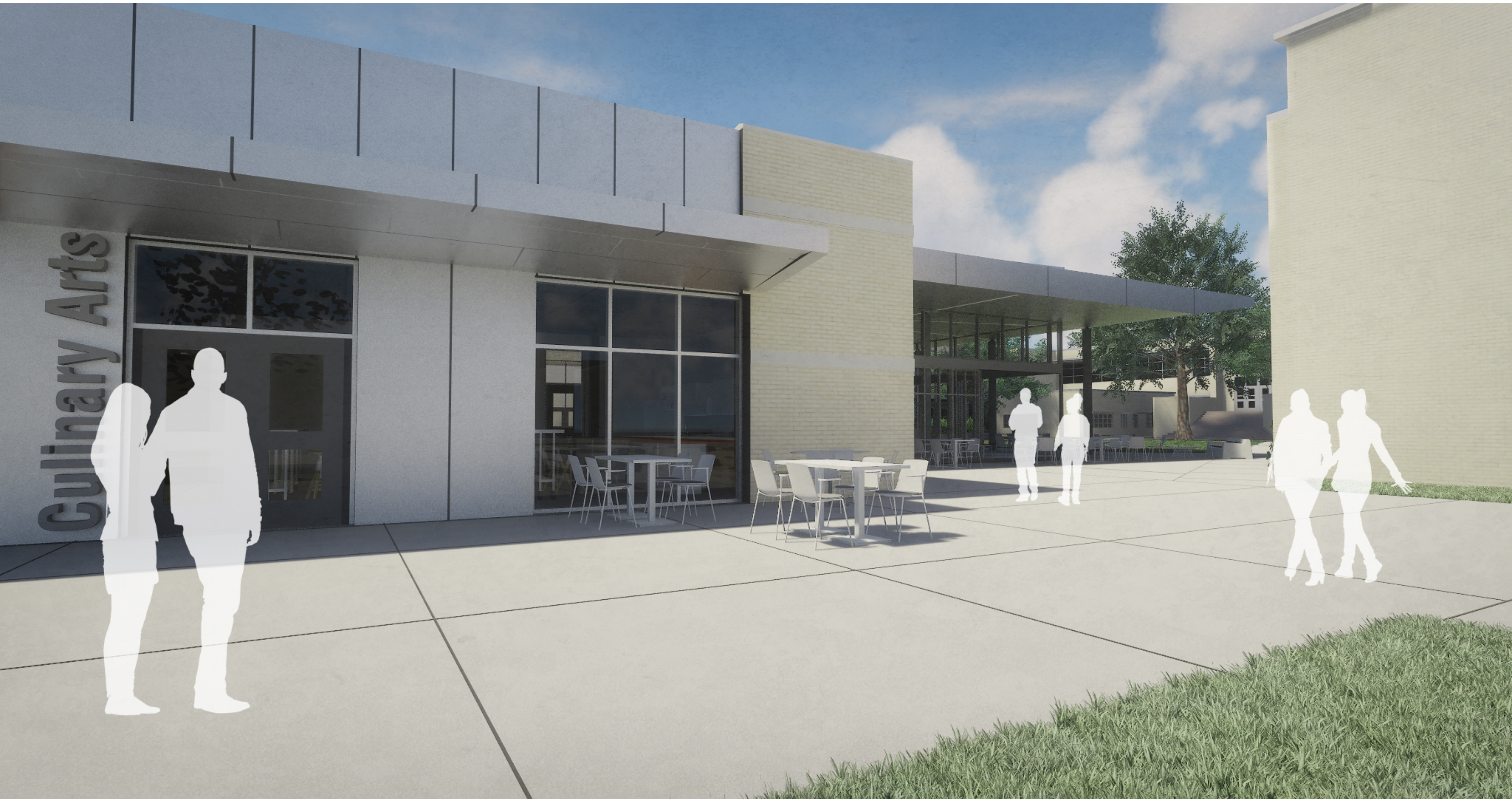
EXTERIOR RENDERING COMMONS



EXTERIOR RENDERING COMMONS



EXTERIOR RENDERING COMMONS/CULINARY



EXTERIOR RENDERING COMMONS/CULINARY



EXTERIOR RENDERING



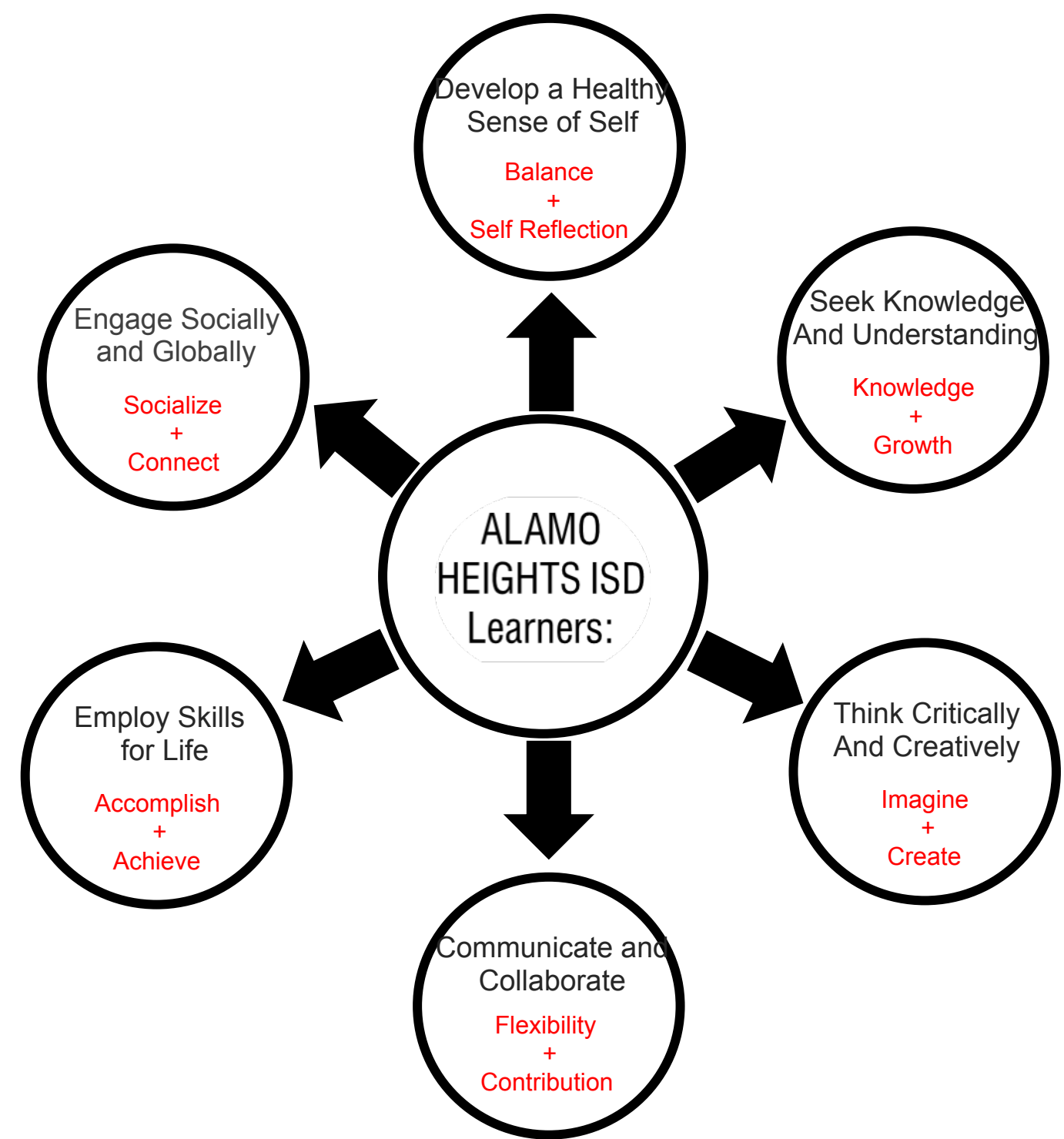
EXTERIOR RENDERING ART PORCH



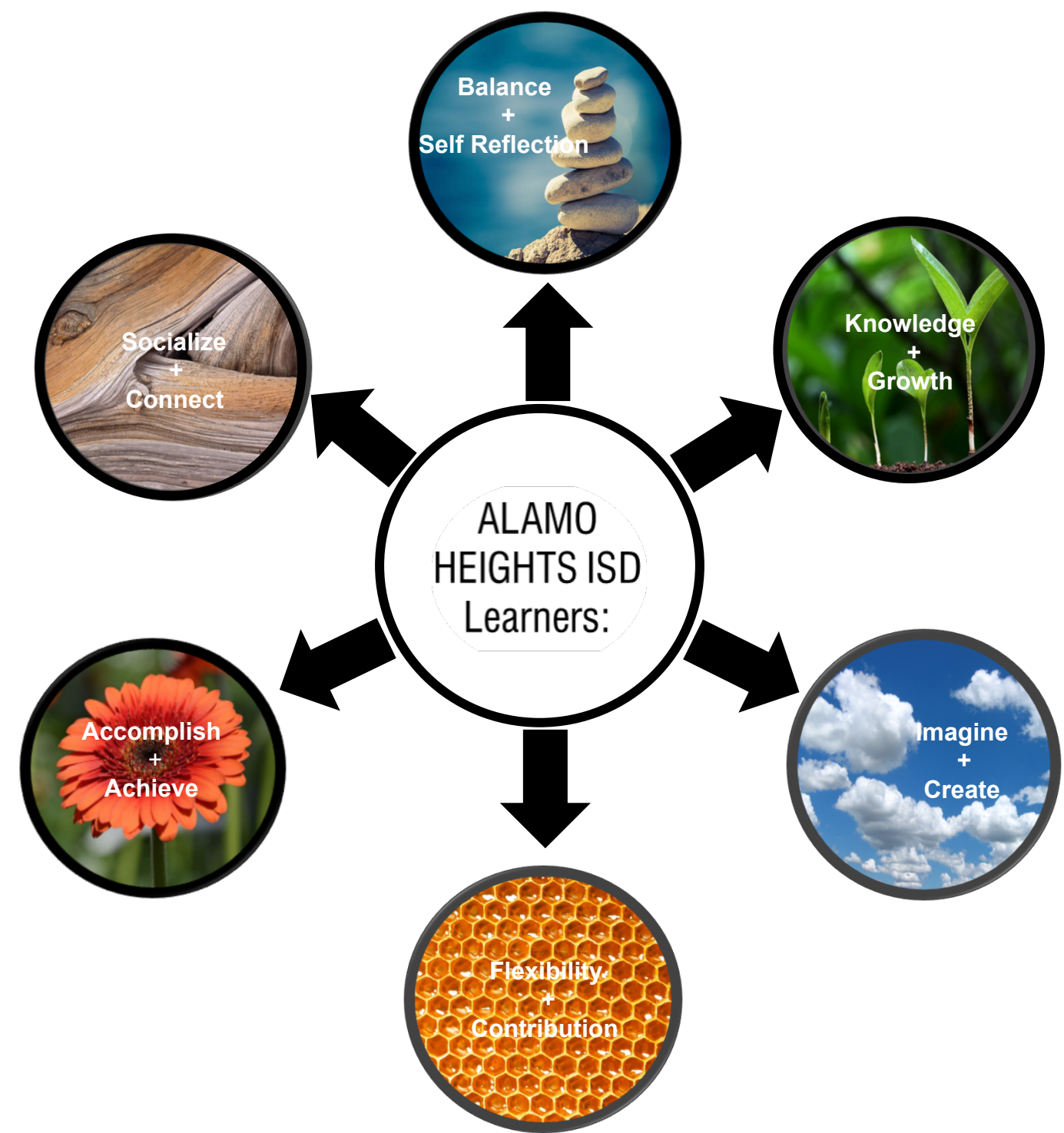
PROFILE OF A LEARNER



PROFILE OF A LEARNER



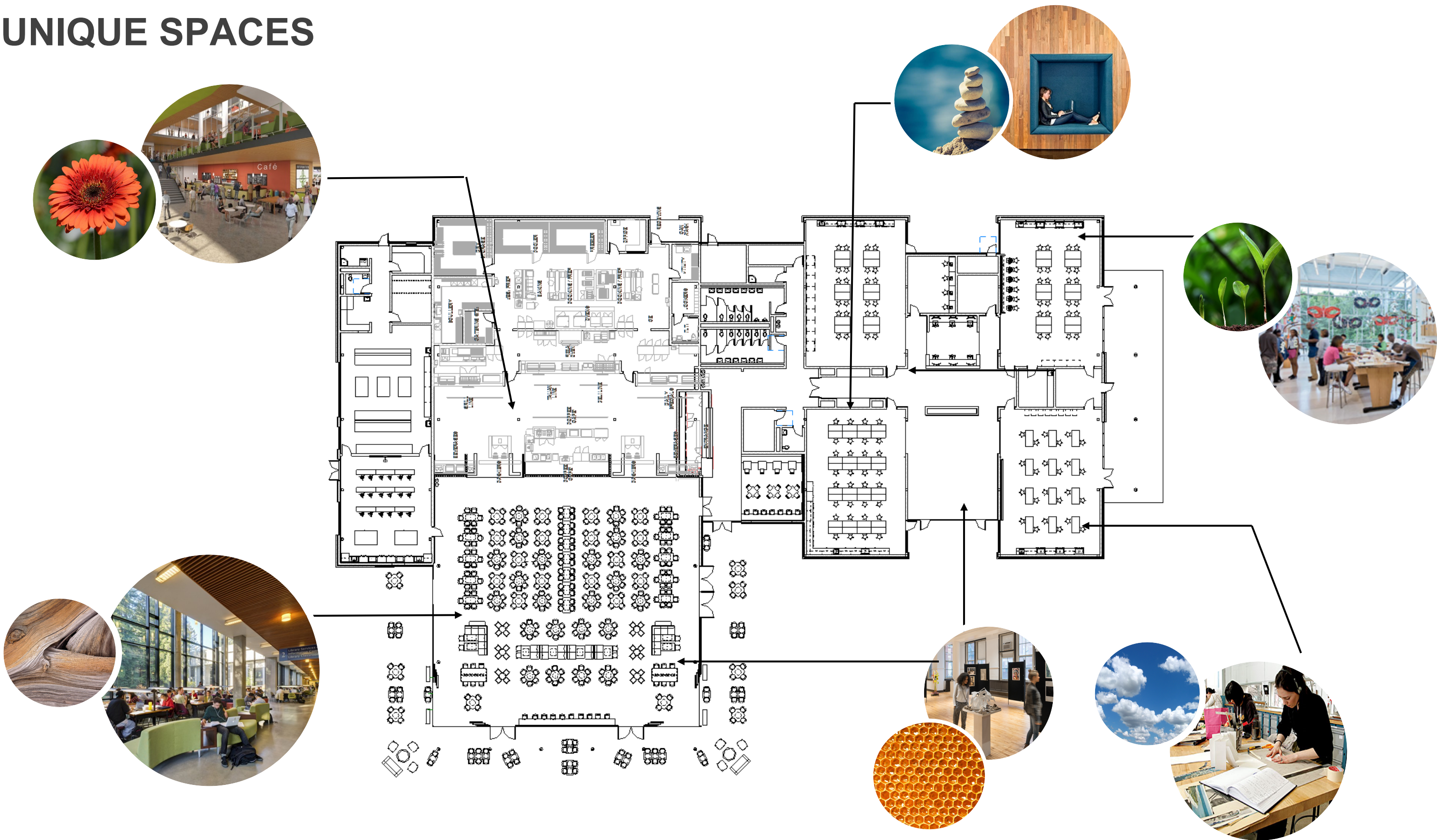
PROFILE OF A LEARNER



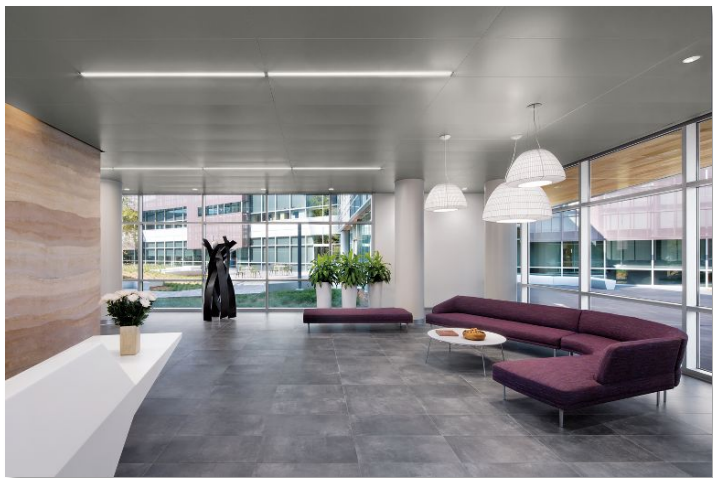
PROFILE OF A LEARNER



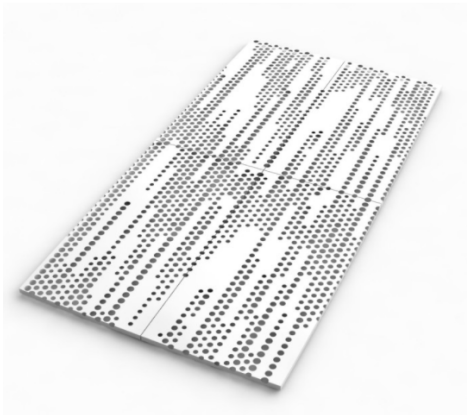
UNIQUE SPACES



INTERIOR FINISHES COMMONS



Acoustical Perforated Metal Panel



Decorative Perforated Metal Panel



Tongue and Groove Wood Accent



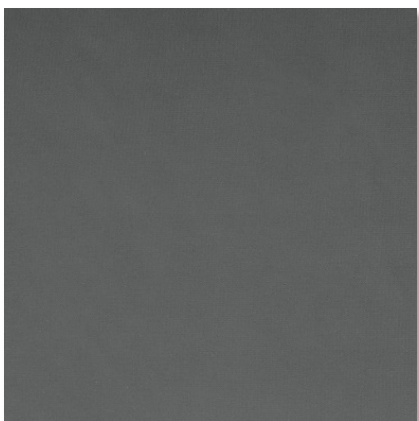
Subway Tile



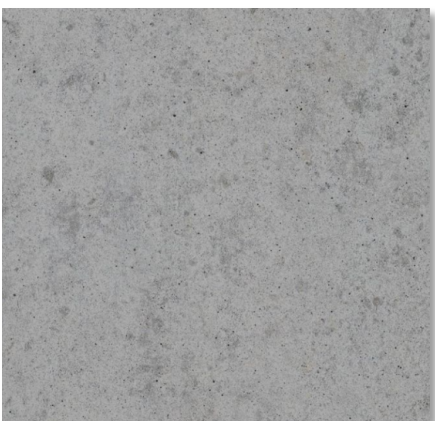
Subway Tile – Large Format



Fabric



Fabric



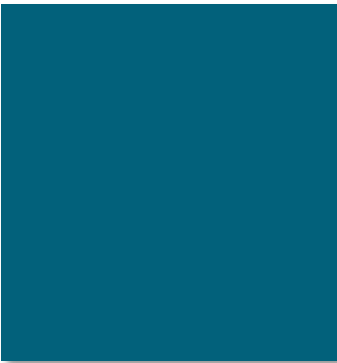
Polished Concrete



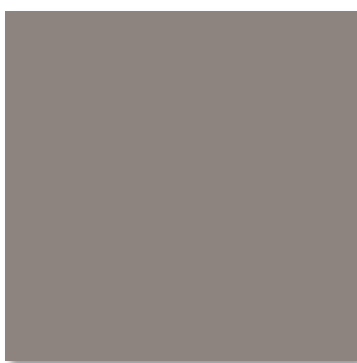
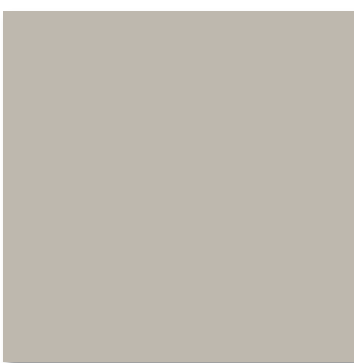
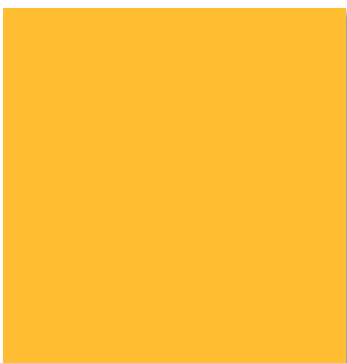
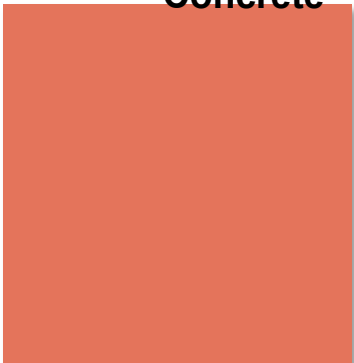
Solid Surface - Quartz



Millwork – Birch Veneer



Paint Colors



INTERIOR RENDERING COMMONS



INTERIOR RENDERING COMMONS



INTERIOR RENDERING COMMONS









Q + A

THANK YOU

INTERIOR RENDERING SHARED ART GALLERY



INTERIOR RENDERING COMMONS

