

LEGAT ARCHITECTS

SUSTAINABILITY | PERFORMANCE | DESIGN

(RE) Constructing Community by
(RE) Imagining School as an Opportunity Center

DAVENPORT
COMMUNITY
SCHOOLS



Michael Maloney

Director of Operations, Davenport Community Schools



Kalyssa Worden

Associate, Legat Architects



Robin Randall

Principal, Legat Architects

OVERVIEW



INTRODUCTION

- Trends in Demographics
 - Household statistics

MACRO SCALE

- Where have the students gone?
 - Statistics
- What are schools doing about it?
 - Next steps

WORKSHOP # 1 – Community Engagement

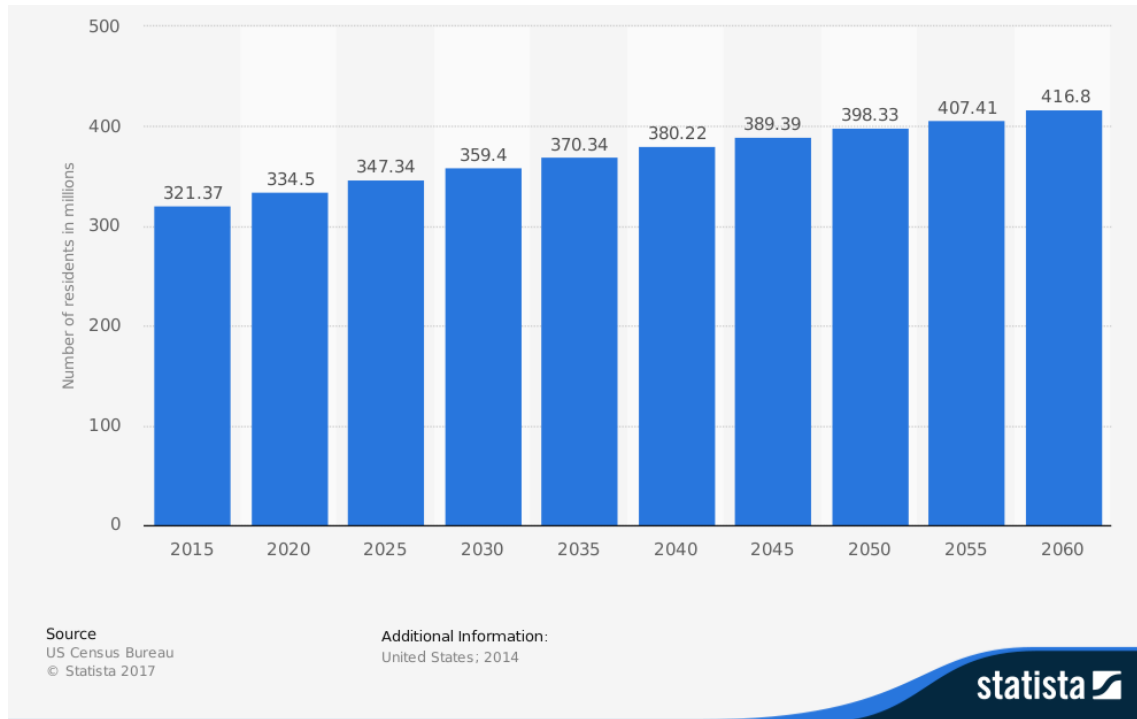
MICRO SCALE

- Close To Home
- Davenport, IA
 - JB Young Case Study

WORKSHOP # 2 – Repurpose CPS School

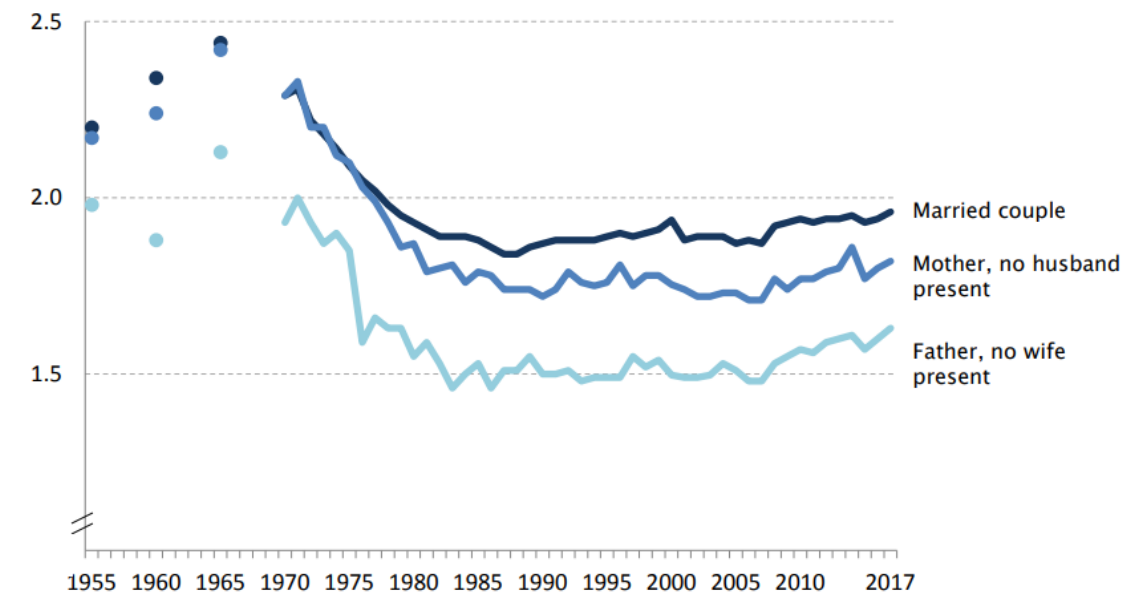
INTRODUCTION

Population projections for the United States from 2015 to 2060 (in millions)



US Population growth & K12 Enrollment

Average number of own children per family (for families with children under 18)



United States Census Bureau
U.S. Department of Commerce
Economics and Statistics Administration
U.S. CENSUS BUREAU
census.gov

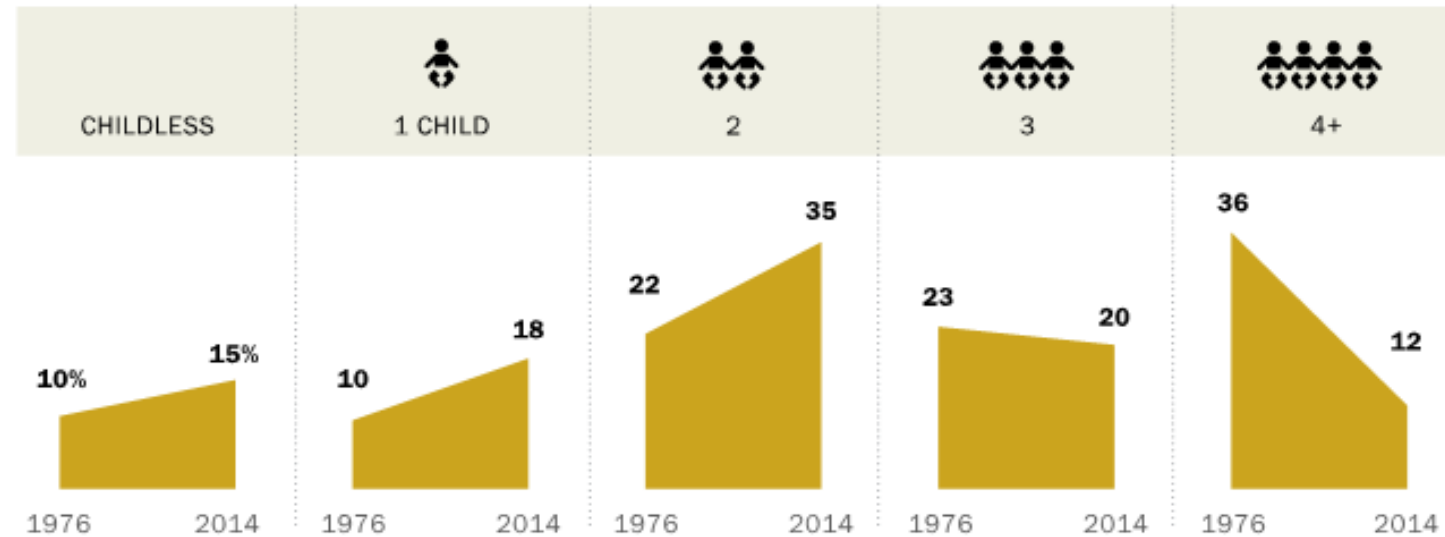
Source: U.S. Census Bureau, Current Population Survey, Annual Social and Economic Supplements, 1955, 1960, 1965 and 1970 to 2017.

The number of children per household has steadily declined since the peak of the baby boom.

INTRODUCTION

The Rise of the Two-Child Family, and the Decline of the Four-Child Family

Share of women ages 40 to 44, by children ever born

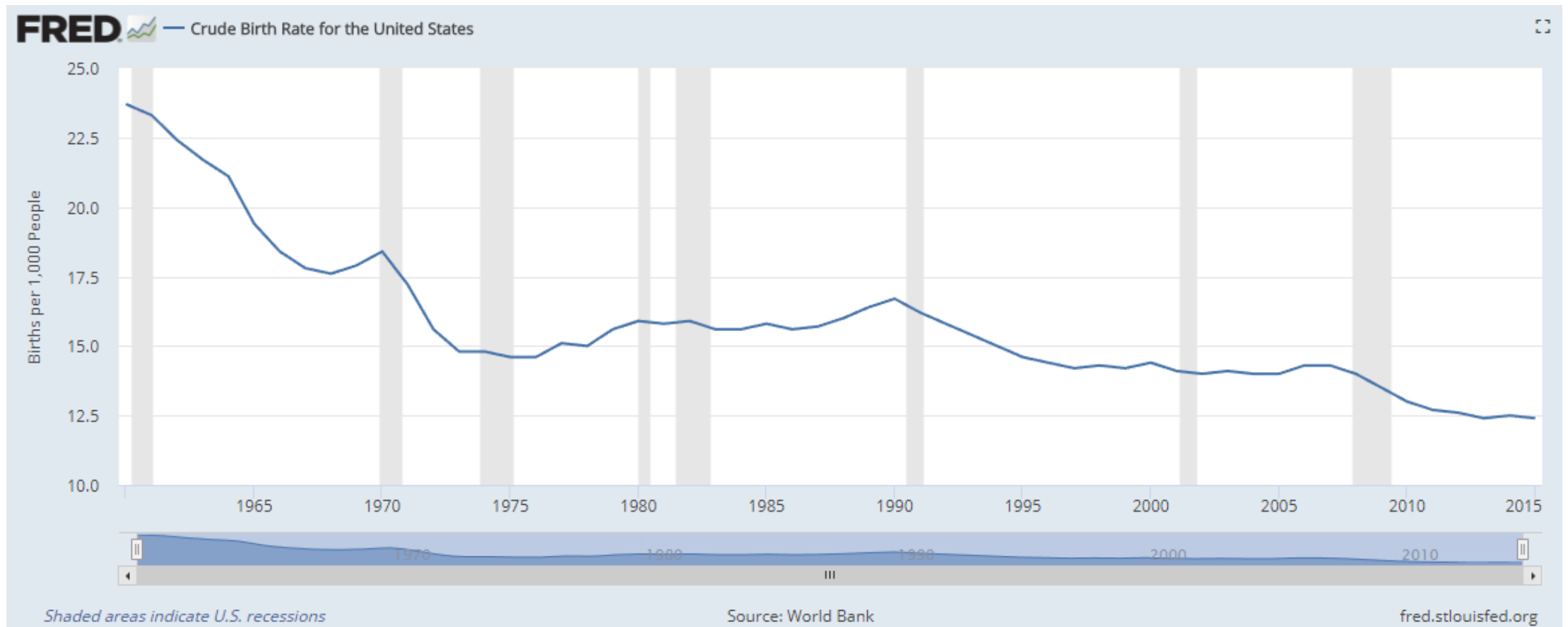


Note: A new working paper suggests that Current Population Survey estimates of childlessness may have been somewhat too large until 2012, when the Census Bureau implemented new editing rules. See "About the Data" for more details.

Source: Pew Research Center analysis of Current Population Survey June Supplements

PEW RESEARCH CENTER

INTRODUCTION

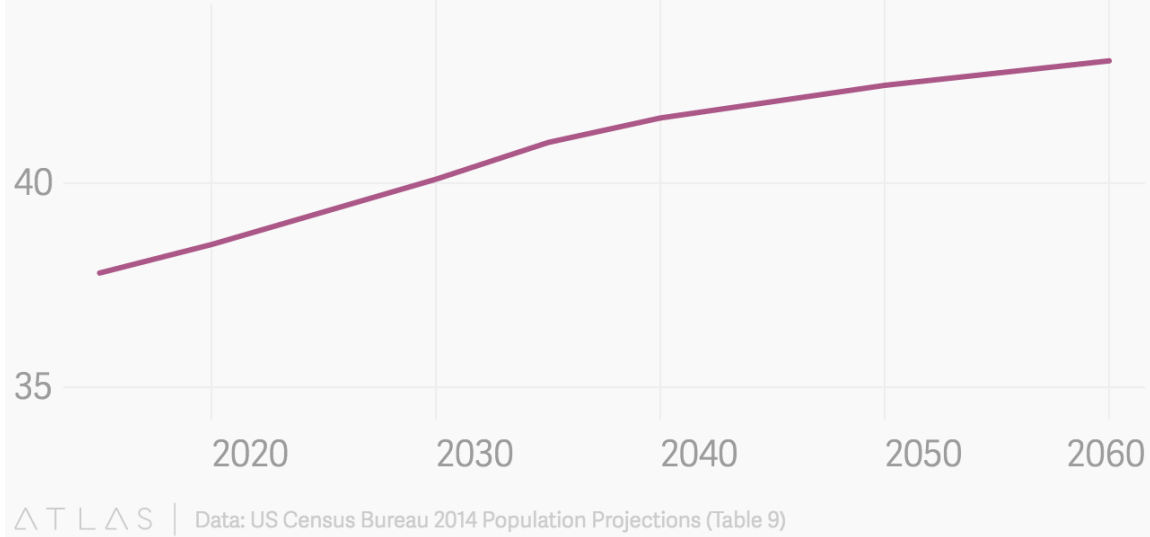


America's birth rate is now a national emergency

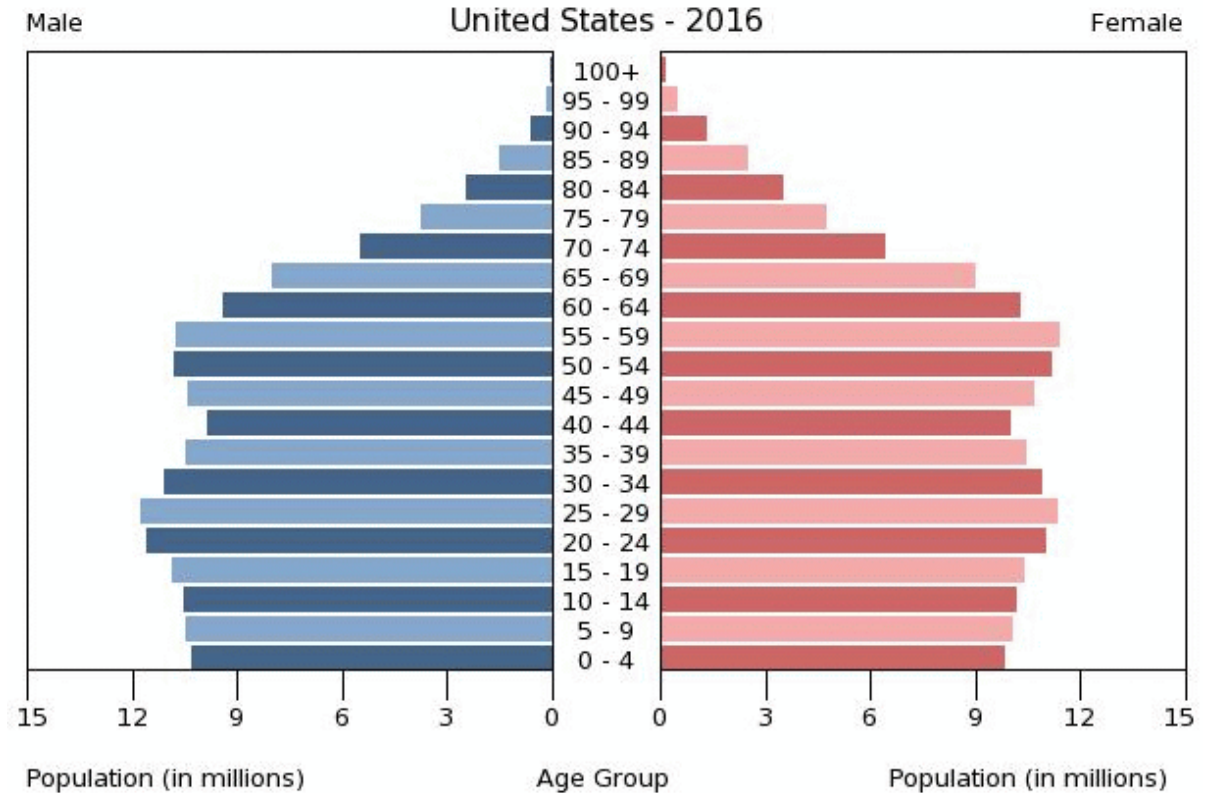
INTRODUCTION

Projected median age of the US population, through 2060

45 years old

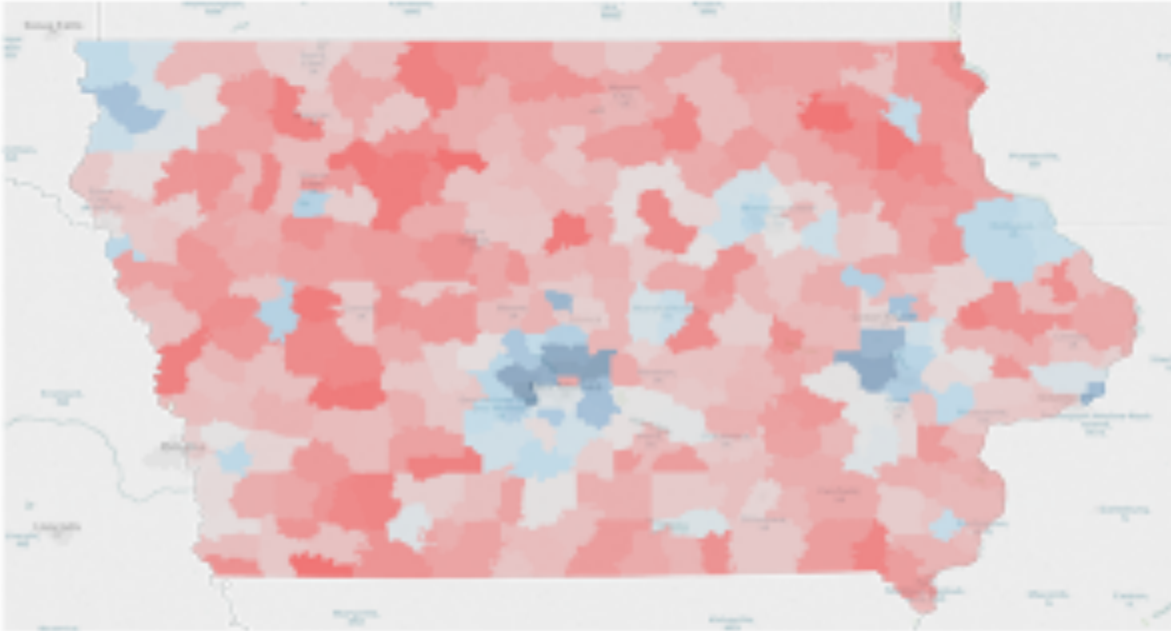


The median age of the US population continues to increase through 2060



The 5 year age cohorts under 24 years are each smaller than the next older cohort.

INTRODUCTION



**Growing versus
declining districts in Iowa
2001 – 2018. Waukee
grew 344% Twin Rivers
declined 44%.**

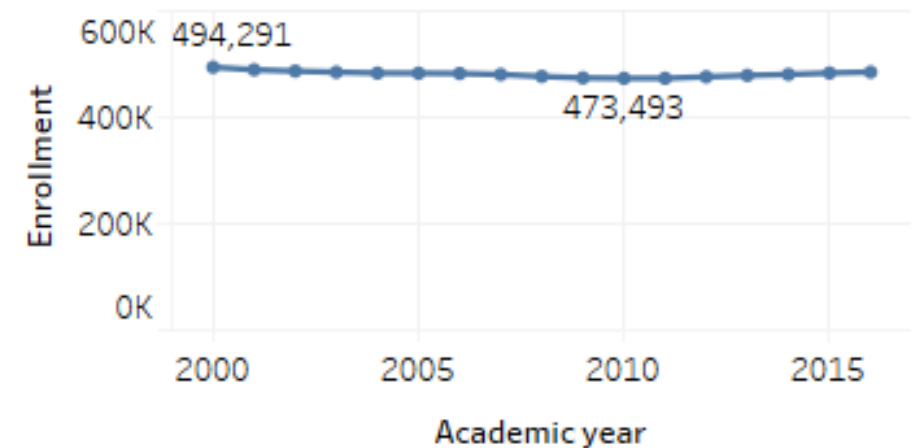
INTRODUCTION



*Enrollment **declined in about 78 percent** of existing Iowa public school districts between academic years **2000 and 2016**. These districts are mostly in rural areas, which aligns with decades-old population trends reflecting residents moving out of rural territories and into urban areas. Between **2015 and 2016**, however, enrollment decline slowed slightly, impacting about **53 percent** of districts.*

Statewide enrollment, 2000-2016

Roll over to see percent change in enrollment since 2000.



WHERE HAVE THE STUDENTS GONE? | STATISTICS

TECTONIC SHIFTS

2.6M

Number of students who attended
charter schools in 2014

62%

Charter school enrollment growth
from 2010 to 2015

160

Districts in which at least 10%
of students enroll in charters

STATISTICS

Every thing is bigger in Texas..



The Dallas Independent School District is facing a perfect storm of declining enrollment and increasing property values. The combination is setting DISD up for 'recapture', which means it will owe the state a projected \$40 million next year.

"I mean I get it, I do," said teacher Ashley Groce. "It's not fair."

Groce, who has been with DISD for 16 years and at Stockard Middle School for 12 years, is one of 475 teachers in the school district to get letters saying they were in "excess", and their jobs were no longer available. "I love my job and I love my kids," said Groce. "It's just a disservice, not only to myself, but to our students."

STATISTICS

URBAN DISTRICTS HIT HARD..

Percentage of students enrolled in charters



93%

NEW ORLEANS PARISH
SCHOOLS



53%

DETROIT PUBLIC SCHOOLS



44%

DISTRICT OF COLUMBIA
PUBLIC SCHOOLS



73%

RURAL DISTRICTS THAT
LOST STUDENTS IN
WISCONSIN (2013-2014)

RURAL SCHOOLS TOO!

STATISTICS

ECONOMIC IMPACT

Fewer students mean fewer resources for key programs



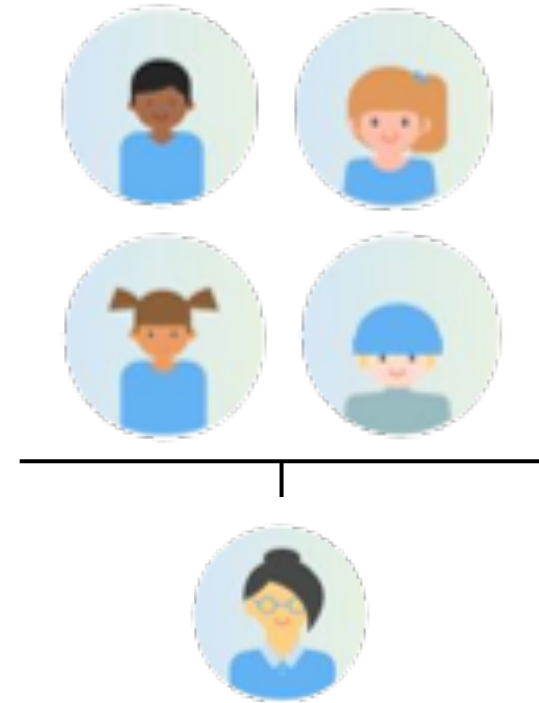
\$11,392

AVERAGE COST PER
FULL-TIME STUDENT



\$45,483

AVERAGE TEACHER
SALARY



4 = 1

LOST
STUDENTS

TEACHER

STATISTICS

ECONOMIC IMPACT

Fewer students mean fewer resources for key programs

1,700

Number of LAUSD
administrators and support staff
who received potential layoff
notices in 2017



***IF YOU HAVE DECLINING
ENROLLMENT, YOU HAVE
DECLINING FUNDING***

Sarah Kemp, Researcher
Applied Population Laboratory

NEXT STEPS

STATISTICS

The gap



47%

Of charter school parents
“**very satisfied**” with
community engagement

THE GAP IS
REAL



34%

Of public school parents
“**very satisfied**” with
community engagement



***IF YOUR SCHOOL OR DISTRICT FAILS TO OFFER PARENTS AND
FAMILIES A QUALITY EXPERIENCE, THEY’LL ENROLL ELSEWHERE.***

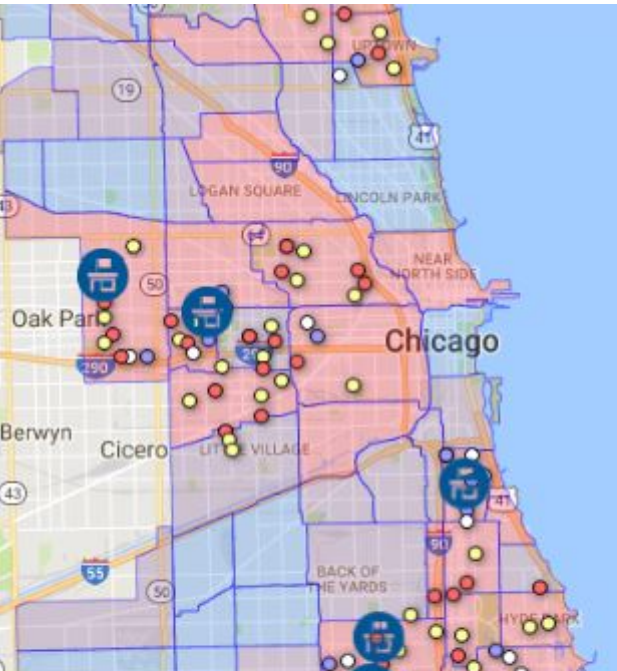
Dr. Gerald Dawkins
Former District Superintendent, SVP K12 *Insight*

WORKSHOP #1 Community Engagement – what ways do you engage ?



CLOSE TO HOME

What's been happening locally



SCHOOL BOARD VOTES TO CLOSE 49 SCHOOLS

The following scoreboard reflects how the Chicago Board of Education dealt with the 54 school closing recommendations on its agenda.

Schools marked **black** are to be closed and schools marked **blue** are to remain open.

Altgeld	Armstrong	Attucks**	Banneker	Bethune	Bontemps	Buckingham	Calhoun	Canter*
De Duprey	Delano	Dumas	Emmet	Ericson	Fermi	Garfield Park	Garvey	Goldblatt
Goodlow	Henson	Herbert	Key	King	Kohn	Lafayette	Lawrence	M. Jackson
Manierre	Marconi	May	Mayo	Morgan	Near North	Overton	Owens	Paderewski
Parkman	Peabody	Pershing MS	Pope	Ross	Ryerson	Sexton	Songhai	Stewart
Stockton	Trumbull	Von Humboldt	West Pullman	Williams ES	Williams MS	Woods	Yale	

* 1-year delay ** 2-year delay

Note: Only 53 schools shown; the Board also voted to close the high school that shares space at Madison elementary and middle schools. CPS CEO Barbara Byrd-Bennett withdrew her recommendations to close Ericson, Garvey, Mahalia Jackson and Manierre schools prior to the meeting. At her request, the board voted not to close those schools.

CLOSE TO HOME



That move will result in the closure of four existing Englewood schools – Hope, Harper, Robeson and TEAM Englewood – at the end of this school year. That means non-graduating students at those schools will have to transfer elsewhere before the new facility opens. CPS says it'll put up \$8.3 million to help them do so and will shift boundaries at Bogan, Gage Park, Phillips and the Chicago Vocational Career Academy High School to provide those students with additional options.



Niketa Brar
@niketasays

#WeAreNTA parents prepare to greet CPS officials who arrived at the school this morning to announce the intentions to close.

8:45 AM - Dec 1, 2017

10 12



Olivia Abrecht
@OliviaAbrecht

Replying to @PerezJr @CPSuccessCHI

Students at Harper held a sit in and walkout at school today to protest closing

10:03 AM - Dec 1, 2017

3

CLOSE TO HOME

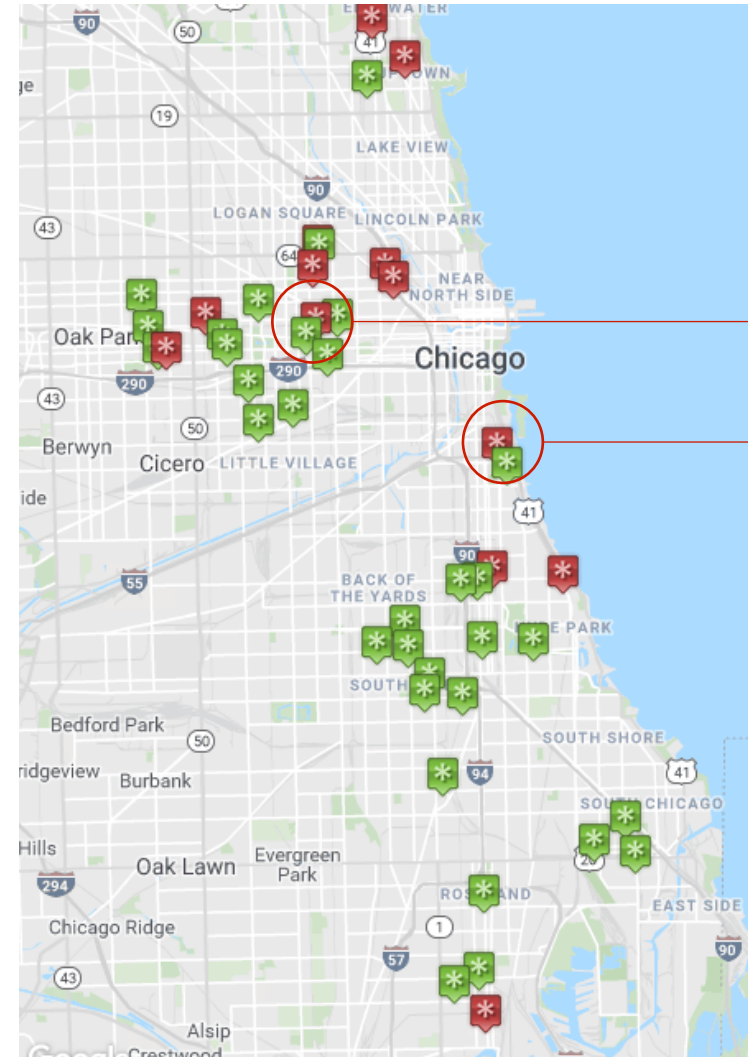
CHICAGO PUBLIC SCHOOLS (CPS)

Advisory Committee for School Repurposing

- Created a website for submission of proposals for the repurposing of former school sites that respect community context
- **Three phase effort**
 1. Immediate Reuse
 - Needs are identified, building quickly put to use
 2. Competitive Redeployment
 - CPS takes reuse proposals & bids, property eventually sold
 3. Development through a Revitalization Partner
 - Utilized when community or financial benefit in repurposing is not apparent




CHICAGO
COMMUNITY
SCHOOLS



Dodge

Drake

 Repurposed

 Undergoing community
engagement process

LEGAT

CLOSE TO HOME

MARY MAPES DODGE PUBLIC SCHOOL

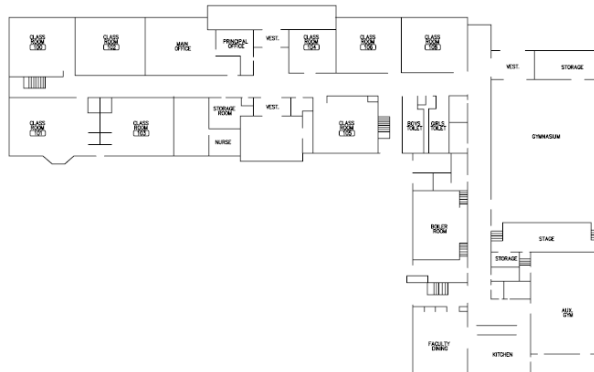
Example of **Phase One**: *Immediate Reuse*

Proposed idea(s)

- After-school art programming for students

Current status

- Repurposed by Chicago Public Schools for administration offices



DODGE

ADDRESS	2651 W Washington Blvd
PIN(S)	16-12-422-030 16-12-422-031 16-12-422-032 16-12-422-033
BUILDING SF	69,600
LAND SF	94,296
INCLUDES ANNEX/ BRANCH	No
OWNERSHIP	PBC
ALDERMAN	R. Fioretti, W. Burnett
WARD	2, 27
NEIGHBORHOOD	Near West Side
ZONING	RT4
MAINTENANCE COSTS (as school)	\$267,600
CARRY COSTS (vacant)	\$89,144

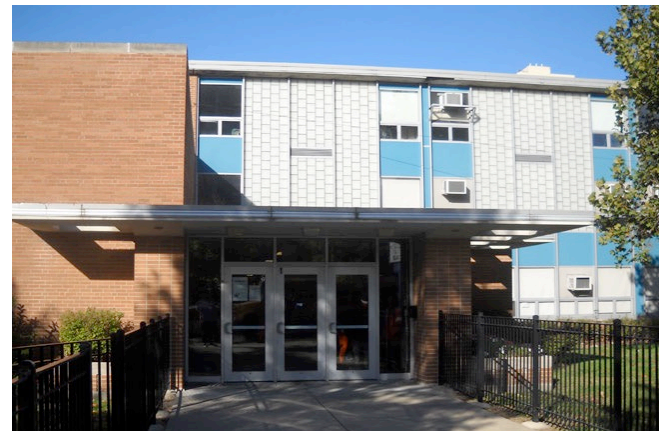
CLOSE TO HOME

JOHN B DRAKE PUBLIC SCHOOL

Example of **Phase Two**: Competitive Redeployment

Proposed idea(s):

- Community center for trades
- Non-profit organization allied with Chicago Teachers Union
- Professional development center
- Classical school



DRAKE	
ADDRESS	2722 S King Dr
PIN(S)	17-27-307-011 17-27-307-012 17-27-307-013 17-27-307-014 17-27-307-015 17-27-307-016 17-27-307-017 17-27-307-018 17-27-307-050 17-27-307-051 17-27-307-070 17-27-307-077 17-27-307-078 17-27-307-079 17-27-307-080
BUILDING SF	57,300
LAND SF	197,580
INCLUDES ANNEX/ BRANCH	No
OWNERSHIP	PBC
ALDERMAN	W. Burns
WARD	4
NEIGHBORHOOD	South Commons
ZONING	RM5 surrounded by residential
MAINTENANCE COSTS (as school)	\$245,050
CARRY COSTS (vacant)	\$147,672

DAVENPORT, IA

J.B. YOUNG HISTORY



John B. Young | the man who:

Valued the philosophy of seizing **opportunities**

Demonstrated **determination** and **perseverance**

Had the **longest tenure** superintendent in Iowa AND the US

J. B. Young | the school that:

Is a **historic three-story** brick building atop a hill looking towards the Mississippi River

Closed in 2016 due to declining enrollment

Will **reopen in 2018** as J.B. Young Opportunity Center

Will house 9 **non-profit** organizations & **additional program** elements



DAVENPORT, IA

J.B. YOUNG OPPORTUNITY CENTER

Will house **10 nonprofit** service organizations

1. Pre-Kindergarten center
2. Davenport Schools Museum
3. Boys and Girls Club
4. Davenport Food Pantry
5. Art Legacy League
6. Safer Foundation
7. Beyond the Baseline
8. Quad City Youth Sports Foundation
9. Pena Boxing Club
10. Culinary educational kitchen

Additional program elements:

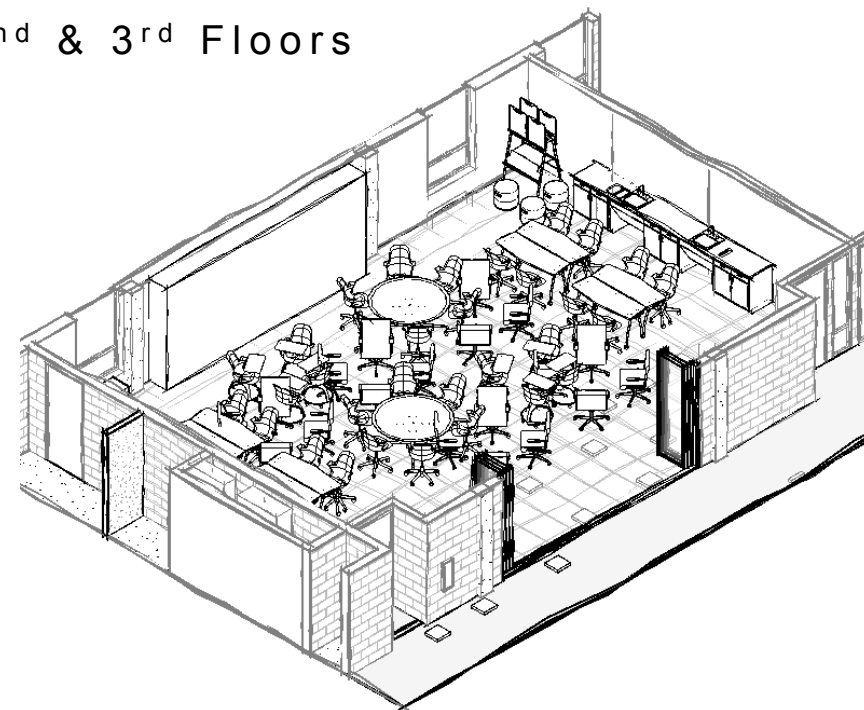
1. District Administration Staff
2. Community Use Classrooms
3. Davenport Schools Board Room
4. Davenport Schools Innovation Center
5. Park with a walking path and interactive art



First Floor Plan



2nd & 3rd Floors



PROGRESS | INTERIOR RENOVATION





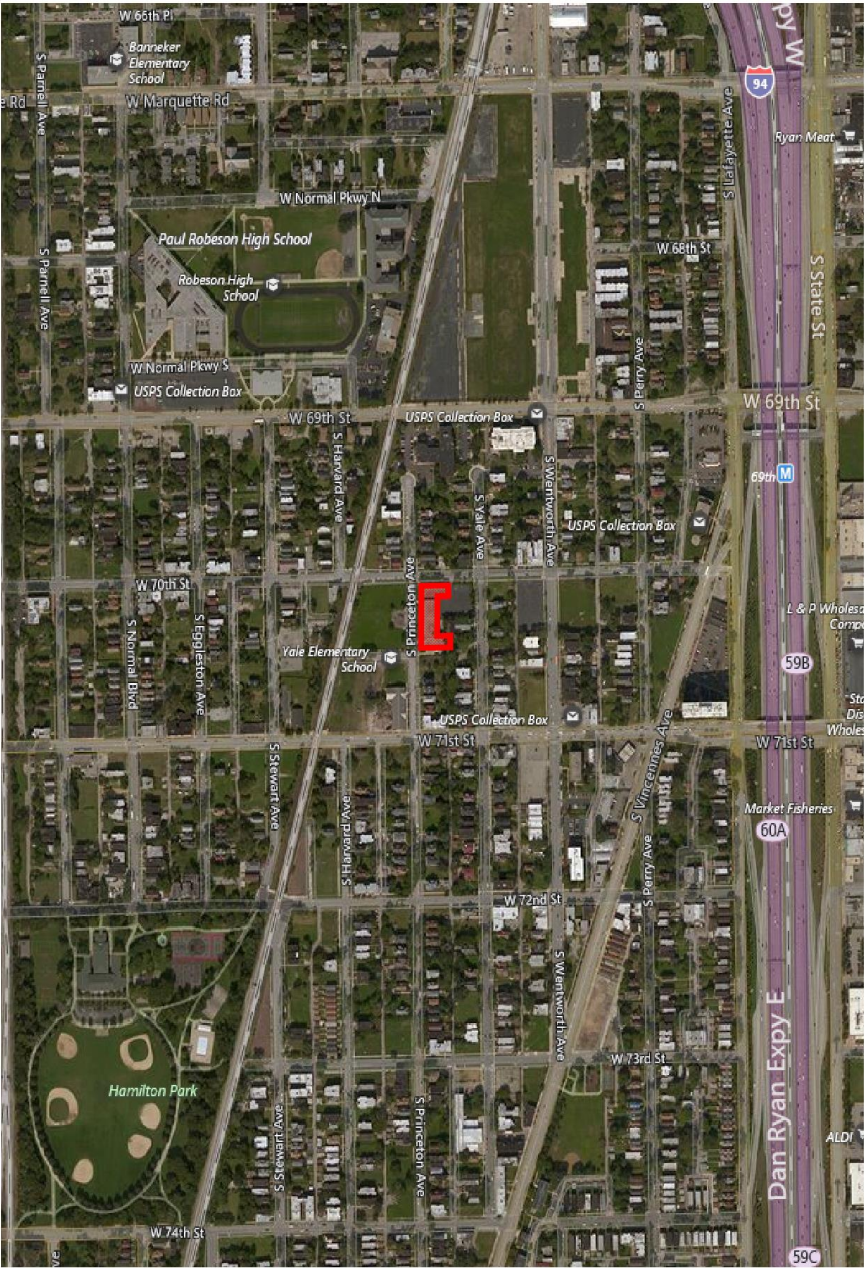
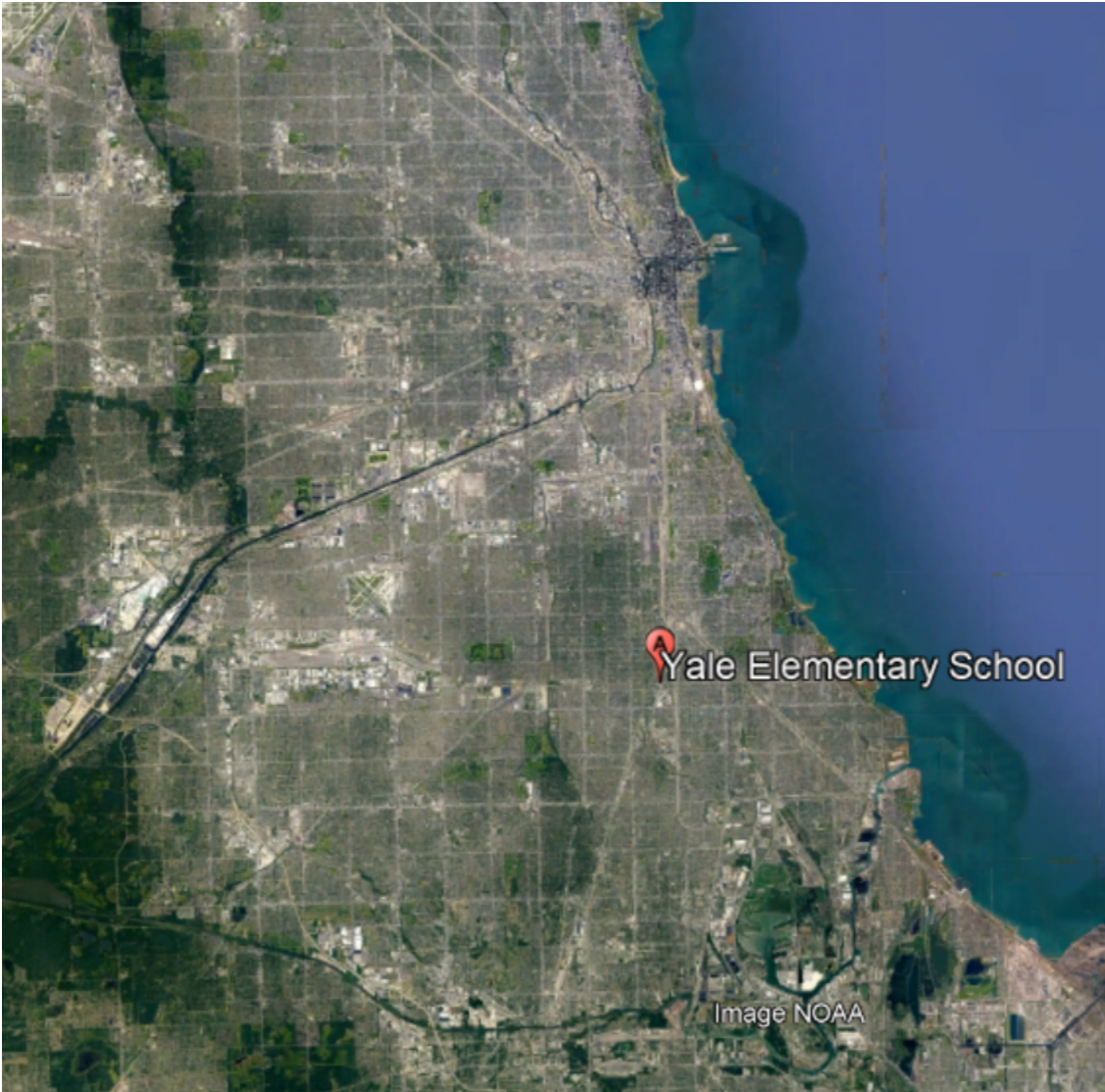


DAVENPORT
COMMUNITY
SCHOOLS





WORKSHOP #2 Re-Purpose Yale Elementary



WORKSHOP #2 Re-Purpose Yale Elementary

